

# RACE BOOK

## 2023

About CYC & CYC Racing Programs [2](#)

Welcome to 2023 Racing from CYC Commodore [3](#)

How to use this Race Book & 2023 Updates [4](#)

Racing Calendar [5](#)

Registration Basics [6](#)

CYC Member Season Pass [7](#)

Entry Fees [8](#)

CYC Notice of Race General Conditions [9-11](#)

Lake Washington Racing

Notice of Race: Lake Tuesday/Wednesday Evening Series [12](#)

Notice of Race: Lake Moonlight Race [13](#)

Notice of Race: Lake Fall Regatta [14](#)

Puget Sound Racing

Notice of Race: Frigid Digits Regatta [15](#)

Notice of Race: Center Sound Series [16](#)

Notice of Race: Center Sound Series: Blakely Rock Race [17](#)

Notice of Race: Center Sound Series: Race #2 [18](#)

Notice of Race: Center Sound Series: Race #3 [19](#)

Notice of Race: CYC Spring Regatta – Large Boat [20](#)

Notice of Race: CYC Spring Regatta – Small Boat [21](#)

Notice of Race: Sound Wednesday/Thursday Evening Series [22](#)

Notice of Race: **(Postponed)** CYC J/FEST 2023 [23](#)

Cruising Race: Commodore and Gibson Races [24](#)

Notice of Race: CYC Midnight Run [25](#)

Notice of Race: Puget Sound Sailing Championships – Small Boat [26](#)

Notice of Race: Puget Sound Sailing Championships – Big Boat [27](#)

Notice of Race: Turkey Bowl Regatta [28](#)

Appendices

US Sailing Safety Equipment Requirements (SER) [29-33](#)

Puget Sound Sailboat Safety Regulations [34](#)

US Coast Guard Warning and Marine Wildlife Law [35](#)

Sector Puget Sound Vessel Traffic Channel Map [36](#)

Buoy Course Marks [37](#)

Puget Sound Geographic / Fixed Position Marks [38](#)

Race Contacts [39](#)

CYC Business Members / Sponsors



## **WHO WE ARE AT CYC**

Seattle's Corinthian Yacht Club sailors have been racing on Lake Washington at Leschi since our founding in 1945 and on Puget Sound out of Shilshole even before members built our clubhouse in 1969. It's very likely that CYC runs more races than any other private sailing club in the US. Corinthian members are passionate about racing sailboats and about the waters of the Pacific Northwest.

## **WHAT WE DO AT CYC**

COME RACE WITH CYC, COME LEARN WITH CYC

Rare among sailing clubs, CYC conducts races on two venues, the fresh water of Lake Washington out of the Leschi Marina and the salt water of Puget Sound and the Salish Sea out of the Shilshole Bay Marina, our "home port". Shilshole is also the site for our youth sailing programs and our Summer Sail Camp.

### **LAKE WASHINGTON RACING**

Evening racing on Lake Washington runs from mid-April through mid-September, out of Leschi. J-24s race on Tuesdays and Thistles, San Juan 24s, Thunderbirds and J-70s race on Wednesdays. Additional fleets are welcome to form and request a place on the starting line.

### **PUGET SOUND RACING**

Evening racing on Puget Sound runs from mid-April through mid-September with keelboat and Star racing on Wednesday and on Thursdays, you'll find I-14, 505, Tasar, Vanguard 15, RS Aero, Laser, Snipe, and Optimist classes racing. We're known for the Center Sound Series mid-distances races in March, Puget Sound Spring Regatta and PS Champs weekend buoy-racing regattas to name a few. Over the summer months, we also support casual racing on Friday nights off the breakwater.

### **YOUTH SAILING: GROWING THE NEXT GENERATION OF SAILORS**

We've ramped up our youth sailing with the Summer Sail Camp, educating as many as 350 juniors with Guppy sailing on summer Wednesday evenings, intermediate to advanced clinics, and family evening sailing on Fridays for more casual and less experienced sailors to enjoy our sport.

### **ANACORTES RACE WEEK**

CYC also co-sponsors Anacortes Race Week, held each summer out of Cap Sante Marina. The Notice of Race and registration information are published separately from this Race Book.



## **Welcome to the 2023 CYC Racing Season**

It's an exciting year for CYC as we welcome everyone back for our very full 2023 race program.

The Corinthian Yacht Club wishes to convey our deepest respect for the Duwamish People as we sail on the shared waters of the Puget Sound and the Salish Sea. With gratitude, we celebrate and honor the unbroken history of the first people of Seattle who were on the sea from time immemorial and continue, as we do also, to be a presence in the region.

We're committed to sailing as a sustainable and environmentally responsible sport. In many practices, from minimizing the use of single-use plastics, avoiding any overboard disposal (including winch handles) to following the guidelines for sailing near endangered marine mammals, we strive to leave nothing but wake and our competitors behind us.

Over the past 18 months we have made a long overdue investment in our race program infrastructure which is hard not to notice when you walk by our club, look at our boats and see us out on the water. All our whalers and race committee boats have followed a maintenance schedule or received a complete refit or significant upgrades, and we are very proud to showcase our equipment this year.

Continuing the 78-year legacy bestowed to us by the group of sailors who started a club to provide high quality racing, we return with a strong core of professional race officers, many race committee volunteers and staff who put in tremendous efforts on and off the water. I look forward to seeing everyone out on the water and at the club.

**Sincerely,  
Wanda Creitz  
2023 Commodore**

# RACE BOOK

# 2023 CONTENTS

## The 2023 RACE BOOK CONTENTS

In the 2023 Race Book, you'll find:

- A downloadable calendar of CYC of Lake and Sound races for 2023
- The Notice of Race for each event
- The CYC Notice of Race General Conditions for CYC Puget Sound and Lake races and,
- The schedule for Casual races such as Cruising Fleet Races and Summer Family Fridays

## WHAT'S NEW IN THE 2023 RACE BOOK

We hope the 2023 CYC race offerings will find you out on the water enjoying (almost) every minute. There are a few changes for 2023 Racebook of note:

- We have added a new event for Sound sailors in 2023, a Destination Distance race in September. Scheduled for September 16<sup>th</sup>, we hope that this event will be a permanent fixture on the CYC calendar and provide an opportunity for more social interactions ashore as well as great racing.
- We have included a one-day Lake Fall Regatta in September for one-design boats on Lake Washington. The regatta is scheduled for September 9th.
- We are adding a fleet of J/70s to the Lake Washington Wednesday night program, working with the existing fleets to assure compatibility with their racing
- We have added a link to the 2023 CYC Racing Season calendar and a link to a calendar of the major racing events on Puget Sound.
- We have provided a mobile version that is designed for your cell phone on water



# LAKE & SOUND 2023 RACE CALENDAR

CYC EVENT   
 SYC EVENT   
 OTHER EVENT

2023 JANUARY 2023							2023 FEBRUARY 2023							2023 MARCH 2023						
MONDAY	TUESDAY	WEDNESDAY	THURSDAY	FRIDAY	SATURDAY	SUNDAY	MONDAY	TUESDAY	WEDNESDAY	THURSDAY	FRIDAY	SATURDAY	SUNDAY	MONDAY	TUESDAY	WEDNESDAY	THURSDAY	FRIDAY	SATURDAY	SUNDAY
						1			1	2	3	4	5			1	2	3	4	5
2	3	4	5	6	7	8	6	7	8	9	10	11	12	6	7	8	9	10	11	12
					S.S.S.S. DUWAMISH HEAD															
9	10	11	12	13	14	15	13	14	15	16	17	18	19	13	14	15	16	17	18	19
												S.S.S.S. TOLMA SHOALS								S.S.S.S. ISLANDS
16	17	18	19	20	21	22	20	21	22	23	24	25	26	20	21	22	23	24	25	26
						FRODO DJITS														CENTER SOUND #3
23	24	25	26	27	28	29	27	28						27	28	29	30	31		
30	31																			

2023 APRIL 2023							2023 MAY 2023							2023 JUNE 2023							
MONDAY	TUESDAY	WEDNESDAY	THURSDAY	FRIDAY	SATURDAY	SUNDAY	MONDAY	TUESDAY	WEDNESDAY	THURSDAY	FRIDAY	SATURDAY	SUNDAY	MONDAY	TUESDAY	WEDNESDAY	THURSDAY	FRIDAY	SATURDAY	SUNDAY	
					1	2	1	2	3	4	5	6	7				1	2	3	4	
					STYC BLAKELY ROCK BENEFIT				LAKE EVENING RACE	SOUND EVENING RACE		STYC RACE TO STRAITS					SOUND EVENING RACE		BLAKE ISLAND		
3	4	5	6	7	8	9	8	9	LAKE EVENING RACE	SOUND EVENING RACE		13	14	5	6	7	LAKE EVENING RACE	8	9	10	11
					EAS. ER/ SOUTHERN STRAITS				LAKE EVENING RACE	SOUND EVENING RACE		VASHON ISLAND	MOTHER'S DAY			LAKE EVENING RACE	SOUND EVENING RACE	SOUND EVENING RACE		CYC J-FEST REG/JTA	
10	11	12	13	14	15	16	15	16	LAKE EVENING RACE	SOUND EVENING RACE		20	21	12	13	LAKE EVENING RACE	14	15	16	17	18
					SPRING REG JTA LAKE BOATS				LAKE EVENING RACE	SOUND EVENING RACE						LAKE EVENING RACE	SOUND EVENING RACE	SOUND EVENING RACE		FATHER'S DAY	
17	18	LAKE EVENING RACE	20	21	22	23	22	23	LAKE EVENING RACE	SOUND EVENING RACE		27	28	19	20	LAKE EVENING RACE	21	22	23	24	25
		LAKE EVENING RACE	SOUND EVENING RACE	SOUND EVENING RACE	SPRING REGATTA SMALL BOATS				LAKE EVENING RACE	SOUND EVENING RACE		SWIFTSURE				LAKE EVENING RACE	SOUND EVENING RACE	SOUND EVENING RACE			
24	25	LAKE EVENING RACE	27	28	29	30	29	30	LAKE EVENING RACE	SOUND EVENING RACE				26	27	LAKE EVENING RACE	28	29	30		
		LAKE EVENING RACE	SOUND EVENING RACE	SOUND EVENING RACE	PROTECTION ISLAND				TUES. EVENING RACE	WEDS. EVENING RACE						LAKE EVENING RACE	LAKE EVENING RACE				

2023 JULY 2023							2023 AUGUST 2023							2023 SEPTEMBER 2023							
MONDAY	TUESDAY	WEDNESDAY	THURSDAY	FRIDAY	SATURDAY	SUNDAY	MONDAY	TUESDAY	WEDNESDAY	THURSDAY	FRIDAY	SATURDAY	SUNDAY	MONDAY	TUESDAY	WEDNESDAY	THURSDAY	FRIDAY	SATURDAY	SUNDAY	
					1	2			2	3	4	5	6					1	2	3	
									LAKE EVENING RACE	SOUND EVENING RACE		COMMONORE/ GIBSON RACE/ CRUISE									
3	4	5	6	7	8	9	7	8	LAKE EVENING RACE	SOUND EVENING RACE				4	5	6	LAKE EVENING RACE	7	8	9	10
		LAKE EVENING RACE	SOUND EVENING RACE	SOUND EVENING RACE	CYC/ SAIL NW FRIDAYS				LAKE EVENING RACE	SOUND EVENING RACE		CYC/ SAIL NW FRIDAYS	LAKE MOONLIGHT RACE			LAKE EVENING RACE	SOUND EVENING RACE	SOUND EVENING RACE		BOAT FISHING	
10	11	LAKE EVENING RACE	13	14	15	16	14	15	LAKE EVENING RACE	SOUND EVENING RACE				11	12	LAKE EVENING RACE	13	14	15	16	17
		LAKE EVENING RACE	SOUND EVENING RACE	SOUND EVENING RACE	CYC/ SAIL NW FRIDAYS				LAKE EVENING RACE	SOUND EVENING RACE		CYC/ SAIL NW FRIDAYS				LAKE EVENING RACE	SOUND EVENING RACE	SOUND EVENING RACE		CYC DISTANCE RACE & ADVENTURE CUP	
17	18	LAKE EVENING RACE	20	21	22	23	21	22	LAKE EVENING RACE	SOUND EVENING RACE				18	19	20	21	22	23	24	
		LAKE EVENING RACE	SOUND EVENING RACE	SOUND EVENING RACE	CYC/ SAIL NW FRIDAYS				LAKE EVENING RACE	SOUND EVENING RACE		CYC/ SAIL NW FRIDAYS									
24	25	LAKE EVENING RACE	27	28	29	30	28	29	LAKE EVENING RACE	SOUND EVENING RACE				25	26	27	28	29	30		
		LAKE EVENING RACE	SOUND EVENING RACE	SOUND EVENING RACE	CYC/ SAIL NW FRIDAYS				LAKE EVENING RACE	SOUND EVENING RACE								SMA PS CHAMPS	BOAT FISHING	FUOL WEATHER BLUFF	

2023 OCTOBER 2023							2023 NOVEMBER 2023							2023 DECEMBER 2023						
MONDAY	TUESDAY	WEDNESDAY	THURSDAY	FRIDAY	SATURDAY	SUNDAY	MONDAY	TUESDAY	WEDNESDAY	THURSDAY	FRIDAY	SATURDAY	SUNDAY	MONDAY	TUESDAY	WEDNESDAY	THURSDAY	FRIDAY	SATURDAY	SUNDAY
						1			1	2	3	4	5					1	2	3
						SMALL BOAT PS CHAMPS														
2	3	4	5	6	7	8	6	7	8	9	10	11	12	4	5	6	7	8	9	10
												OLYMPIA COUNTY								S.S.S.S. WINTER VASHON
9	10	11	12	13	14	15	13	14	15	16	17	18	19	11	12	13	14	15	16	17
					FULL LARGI BOAT PUGET SOUND CHAMPS							TURKEY BOWL								
16	17	18	19	20	21	22	20	21	22	23	24	25	26	18	19	20	21	22	23	24
23	24	25	26	27	28	29	27	28	29	30				25	26	27	28	29	30	31
						GRAND PRIX														

# CYC RACE ENTRY BASICS

## ELIGIBILITY

Eligibility is noted in the Notice of Race (NOR) for each event. In general:

**All CYC races are open to CYC members. Certain events are open to all**

- Puget Sound Weekend Regattas are open to all
- Lake Weekend Regattas are open to all
- Weeknight Series Registration Eligibility: CYC Adult / Family, Senior, Honorary Life, and Junior Members
- Prospective members may race in these series for one season on request.

### How to Register to Race

Visit [CYC Seattle - Racing Calendar](#), click on the race day event link.

Please register online as early as practicable to encourage other boats in your class to race with you. Early registrations are akin to a competitive challenge: “I’m in, are you?”, letting others know who they may meet on the starting line. The more the merrier in the Clubhouse post-race.

- PHRF or ORC entrants must have an up-to-date rating certificate.
- One-design Class entrants must meet their fleet measurements

### Early Registration Incentive

For each individual event registration, we request that boats register 2 weeks prior to the event. As a thank you for registering early, you’ll enjoy a lower race fee.



### A Comment About Race Fees from the CYC Board of Directors

You’ve probably noticed around a 15% Race Fees increase over last season’s fees. This is the club’s first raise in fees since 2019. We’ve carefully considered how to best cover the operating costs from recent inflation, to ensure that we maintain the high quality of racing that is the CYC trademark and further the founding mission of the CYC.

It’s no secret and widely applauded that we have invested tens of thousands of dollars in refurbishing our race support boats and equipment. Our goal is to maximize their reliability and effectiveness in supporting first class racing operations.

We appreciate your understanding and wish to control costs as much as practical in the future while maintaining the outstanding tradition of CYC racing.



# CYC SEASON PASS & RACE CONFIRMATION

## FEE STRUCTURE

### Get a CYC Season Pass: A Full Year of Racing for Less!

CYC Members enjoy a special value CYC Season Pass for race fees. However, the CYC Season Pass does not automatically register you for each race.

~Please note you must confirm your participation for each individual race by registering on the race day event link at [CYC Seattle - Racing Calendar](#)~

The CYC Season Pass is non-transferable between owners and classes.

The CYC Season Pass is sold to the boat and owner together. If you change boats mid - season regardless of the boat type, you'll continue to use the same Pass.

For unique circumstances, contact the Fleet Captain - Race through the CYC Office.

### Lake Race CYC Season Pass Includes:

- All Spring, Solstice, Summer, & Fall Tuesday or Wednesday Evening Series
- CYC Spring Regatta, PSSC and Lake Weekend Regattas
- Moonlight Lake Race
- Lake Fall Regatta

### Sound Race CYC Season Pass Includes:

- All CYC Puget Sound Weekend Regattas
- All CYC Spring, Solstice, Summer, & Fall Wednesday or Thursday Evening Series
- Moonlight Lake Race and Lake Fall Regatta.
- Turkey Bowl
- Frigid Digits (of current year)

### Race Participation Confirmation

Each Season Pass holder shall confirm their participation two weeks before each race on the [CYC Seattle - Racing Calendar](#) event page online. This will allow better allocation of resources, organizing volunteers, and social events.

Late entries necessitate re-writing class breaks, scoring sheets, flags, and boat data. These race materials are created by registration data exports and hand compiled by volunteers.

Inserting late boats means extra Friday night effort by volunteers, who are also racers such as yourself.

Please register online or hand deliver to the CYC clubhouse well before the entry deadline.

Confirmation and Early Registration deadlines are listed in each Notice of Race

Provisions for late registrations will be included in each race Sailing Instructions.

# 2023 RACE FEES

\*Early Registration is up to 2 weeks before race\*

	*Early* Registration Fee	Registration Fee	Suggested Equipment Maintenance DONATION
<b>Lake Washington CYC Season Pass (+ Sound Weekend Regattas)</b>			
Keelboats	\$750	\$750	\$50
Centerboards	\$330	\$330	\$30

## Lake Washington Single Events

<b>Tue &amp; Wed Evening Series (Single Series)</b>	\$220	\$220	\$20
Moonlight Race	\$60	\$70	\$10
Lake Fall Regatta	\$60	\$70	\$10

## Puget Sound CYC Season Pass (+ Lake Weekend Regattas)

Keelboats - 12 m (39 ft.) and up	\$800	\$800	\$50
Keelboats - Less than 12 m (39 ft.)	\$750	\$750	\$50
Centerboards	\$330	\$330	\$30

## Puget Sound Single Events

Frigid Digits Regatta	\$70	\$80	\$10
<b>Center Sound Series</b>			
Keelboats - 12 m (39 ft.) and up	\$235	\$250	\$20
Keelboats - Less than 12 m (39 ft.)	\$210	\$225	\$20
Casual Class	\$115	\$125	\$10
<b>Center Sound Individual Race</b>			
Keelboats - 12 m (39 ft.) and up	\$100	\$110	\$10
Keelboats - Less than 12 m (39 ft.)	\$80	\$90	\$10
Casual Class	\$80	\$90	\$10
<b>CYC Spring Regatta</b>			
Keelboats - 12 m (39 ft.) and up	\$240	\$260	\$20
Keelboats - Less than 12 m (39 ft.)	\$210	\$230	\$20
Centerboards	\$80	\$100	\$10
<b>Wed or Thurs Evening Series (Single Series)</b>			
Keelboats	\$210	\$210	\$20
Centerboards	\$95	\$95	\$10
<b>Commodore-Gibson</b>			
CYC Juan de Fuca Distance Race	\$80	\$95	\$15
<b>Puget Sound Sailing Championships (PSSC)</b>			
Keelboats - 12 m (39 ft.) and up	\$240	\$260	\$20
Keelboats - Less than 12 m (39 ft.)	\$210	\$230	\$20
Centerboards	\$80	\$100	\$10
Turkey Bowl Regatta	\$70	\$80	\$10



# CYC NOTICE OF RACE GENERAL CONDITIONS

This section of the Notice of Race (NOR) applies to all CYC Races identified in this Race Book. It addresses common items that are incorporated into the event specific NOR for each event, except as specifically noted.

The organizing authority is the Corinthian Yacht Club of Seattle (CYC).

## 1 Rules

1.1 This regatta will be governed by the rules as defined in the Racing Rules of Sailing (RRS).

1.2 US Sailing prescriptions to the following rules apply: RRS 25.1, 32, 34, 60.3, 61.4, 63.1, 63.2, 63.4, 64.4(b), 67, 70.5(a), 76.1, 81, 86.3, 88.2, Appendix G and R.

Inclusion of additional prescriptions may be noted elsewhere in the NOR or Sailing Instructions (SIs). US Sailing prescriptions are available at [www.ussailing.org](http://www.ussailing.org) and in the [US Sailing version of the RRS](#).

1.3 Changes to the rules may be noted elsewhere in the NOR or SIs. If the NOR and SIs are in conflict, the SIs have precedence.

1.4 Prior to the publication of the Sailing Instructions, changes to the NOR will be available on the CYC website at [cycseattle.org/racing](http://cycseattle.org/racing). After the publication of the Sailing Instructions, changes to the NOR will be available on the official notice board described in the Sailing Instructions.

## 2 Eligibility and Entry

2.1 Entrants must register online at [cycseattle.org/racing](http://cycseattle.org/racing), or by form delivered to CYC, and pay appropriate fees by the registration deadline. Registrations accepted at the discretion of the organizing authority or race committee after the deadline may be assessed a \$20 late fee.

2.2 Boats must be insured with valid third-party liability insurance with coverage of at least \$300,000 per incident.

2.3 A boat wishing to use sails with identification different from her registered sail number must receive permission from CYC by the registration deadline or when her late registration is accepted. This changes RRS 77.

2.4 A boat racing in a handicap class must ensure her handicap is issued and recorded by the handicap class organization before the registration deadline or when her late registration is accepted. Boats participating without a valid class certificate may not be scored and are subject to protest if scored. Her entry fee may not be refunded. A change in a boat's handicap will take effect on the day it is recorded by the handicap class organization. Changes are not retroactive. When a boat's handicap class rating changes between races that are part of a series, the boat remains in the same class in which she started the series.

2.5 A boat rated by her handicap class in consideration of water ballast may use water ballast as rated. This changes RRS 51.

2.6 Competitors give absolute right and permission for images and video of themselves and their boat to be published for commercial purposes by the event organizing authority and sponsors and their licensees and may be required to sign a release to complete the boat registration.

# CYC NOTICE OF RACE GENERAL CONDITIONS

2.7 Competitors may be required to complete release of liability, depiction release, medical consent, and medical and emergency information forms and agreements to complete the boat registration.

## 3 Operating and Equipment Requirements

3.1 RRS 40.1 applies for all centerboard boats. In addition, centerboard boat competitors sailing in regattas 1 November through 31 March must also wear a wet suit or dry suit in addition to the required personal floatation device.

3.2 Boats designated in the specific NOR must comply with the equipment requirements of US Sailing's *Safety Equipment Requirements* (SER), according to the category requirement identified, if any, in the NOR. The text of these regulations is available from the US Sailing website at [www.ussailing.org](http://www.ussailing.org). The following changes apply to SER Nearshore:

- (a) SER 2.4 required, except for boats under 9 meters (29 ft) or boats under 12 meters (38 ft) with crew position inboard except briefly to perform a necessary task. For boats that do not meet SER 2.4, RRS 40.1 is in effect.
  - (b) SER 2.4.4 amended to add "Exception: While wire is recommended for durability, if the person in charge believes it to be safer for the crew, lifelines may be high molecular weight polyethylene (HMPE) line with spliced terminations or terminals specifically intended for the purpose. When HMPE is used, the load-bearing portion (core) shall meet or exceed minimum diameter requirements."
  - (c) SER 2.7.2 required for all races.
  - (d) SER 3.7.2 required for all races. Change, "A boat shall have a man overboard pole and flag, with a lifebuoy, a self-igniting light, a whistle, and a drogue attached. A self-inflating..." to "A boat shall have a lifebuoy with a whistle, and a drogue attached. A self-igniting light must also be attached when sailing between sunset and sunrise. A man overboard pole, self-inflating ..."
  - (e) SER 3.22 required for all races
  - (f) SER 3.26 required for all races.
- 3.3 These changes are summarized (for Nearshore) in the SER included in the Appendices.
- 3.3 Keelboats must comply with federal safety regulations concerning life jackets (33 CFR 175 Subpart B), visual distress signals (33 CFR 175 Subpart C), fire extinguishers (46 CFR 25.30), sound producing devices (33 CFR 83 Subpart D), and navigation lights (33 CFR 83 Subpart C). These are identified in US Coast Guard publication *A Boater's Guide to the Federal Requirements for Recreational Boats*, available at [www.uscgboating.org](http://www.uscgboating.org).
- 3.4 The race committee or technical committee may inspect a boat at any time before or after racing for compliance with requirements.

# CYC NOTICE OF RACE GENERAL CONDITIONS

## 4 Scoring

- 4.1 The time limit is the maximum allowable time from a boat's starting signal to her finishing time or a time of day. A boat that does not finish within the time limit will be scored Did Not Finish (DNF). This changes RRS 35.
- 4.2 A boat scored OCS, NSC, DNF, RET, DSQ, DNE, UFD, or BFD shall be scored points for the finishing place one more than the number boats *starting, sailing the course, and finishing* and not retiring or being disqualified. A boat scored DNC or DNS shall be scored points for the finishing place two more than the number boats *starting, sailing the course, and finishing* and not retiring or being disqualified. This changes RRS A5.2.
- 4.3 Corrected times for PHRF-NW handicap classes will be calculated using the Time on Distance method.
- 4.4 Corrected times for the ORC classes will be calculated using the Time on Time method, using the all-purpose, medium wind numbers unless otherwise specified.

## 5 Sailing Instructions

- 5.1 Sailing Instructions will be available two days before the regatta on the CYC website at [www.cycseattle.org/racing](http://www.cycseattle.org/racing) or, if not available on the website, on the notice board at the CYC clubhouse.

## 6 Risk Statement

- 6.1 RRS 3 states: 'The responsibility for a boat's decision to participate in a race or to continue to race is hers alone.' By participating in this event each competitor agrees and acknowledges that sailing is a potentially dangerous activity with inherent risks. These risks include strong winds and rough seas, sudden changes in weather, failure of equipment, boat handling errors, poor seamanship by other boats, loss of balance on an unstable platform and fatigue resulting in increased risk of injury. Inherent in the sport of sailing is the risk of permanent, catastrophic injury or death by drowning, trauma, hypothermia or other causes. Consequently, the race organizers (organizing authority, race committee, technical committee, protest committee, host club, sponsors, or any other organization or official) will not be responsible for damage to any boat or other property or the injury to any competitor, including death, sustained as a result of participation in this event. By participating in this event, each competitor agrees to release the race organizers from any and all liability associated with such competitor's participation in this event to the fullest extent permitted by law.
- 6.2 Restrictions placed by government authorities on resident activities and business operations may apply and change frequently. CYC has no jurisdiction over the operation of boats (which are the private property of others) participating in CYC events outside the scope of the Racing Rules of Sailing. By registering and participating in a CYC event, the boat owner/operator acknowledges government restrictions may apply and takes full responsibility for operating under those applicable restrictions. CYC is not responsible for any participants failing to follow any restrictions



## Tuesday & Wednesday Evening Series Notice of Race

**Dates:** There are four Tuesday Evening series and four Wednesday Evening series

Series	Tuesday	Wednesday
Spring	April 18, 25, May 2, 9 & 16	April 19, 26, May 3, 10 & 17
Solstice	May 23, 30, June 6, 13, 20 & 27	May 24, 31, June 7, 14, 21 & 28
Summer	July 4 (bye), 11, 18, July 25, August 1, & 8	July 5, 12, 19, July 26 & August 2
Fall	August 15, 22, 29 September 5 & 13	August 9, 16, 23, 30 September 6 & 14

**Location:** Lake Washington off Leschi Marina.

**Classes:**

**Tuesdays:** J/24

**Wednesdays:** Thunderbird, San Juan 24, Thistle, J/70

Other centerboard and small keelboat classes with at least five boats may apply.

**Event Schedule:**

**1715 – 1745** Practice starts (when available)

**1800** First warning signal

The race committee intends to conclude racing at a time that will permit boats to return to Leschi Marina before dark.

**Courses:** Courses will typically be windward / leeward and may include gates, offsets, and gybe marks. Two to four races are targeted for each day. Target race duration is 20 to 40 minutes.

**Scoring:** A boat's series score will be the total of her race scores, excluding one worst score if at least six races are completed, and two scores will be excluded if at least twelve races are completed. This changes RRS A2.1. One race will constitute a series.

**Time Limit:** 60 minutes for the first boat in class to finish. Other boats must finish within 20 minutes of the first boat that finishes.

**Awards:** Presented at the end of each series.

**Other Provisions:** CYC Notice of Race General Conditions applies

**Registration:** Visit [CYC Seattle - Racing Calendar](#), click on the race day event link

**Confirmation:** Season Pass holders must confirm by Thursday before the race





# Notice of Race Moonlight Lake Race

**Date:** Saturday, August 12, 2023

**Location:** Lake Washington, starting and finishing lines off Leschi.

**Classes:** PHRF-NW, IRC/ORC, J/24, Thunderbird, and San Juan 24. Other keelboat classes with a PHRF rating may apply.

**Event Schedule:**

**Saturday**

- 1730-1745 Competitor’s briefing
  - 1900 First warning signal
  - 2100 No warning signal after this time
- Awards at Leschi near committee boat moorage after race

**Course: Course distance ~ 10.5 NM.**

The Race Committee will be on shore in the vicinity of the North Leschi Starting Shack and communicate starting times, classes and OCS boats via VHF per Sailing Instructions.

- Start at the starting line off Leschi, between two robot marks.
- After starting in a northerly direction, pass under the east span of the Evergreen Point Floating Bridge (AKA the “520 Bridge”) northbound
- Round a permanent white mark approx. 250 E of Magnuson Park Boat Launch to port Pass under the east span of the Evergreen Point Floating Bridge southbound,
- Finish at the start/finish line off Leschi. The first boat to finish shall be the winner.

**Shortened Course Distance ~5.2 NM:** The race committee may shorten the course by announcement via VHF per Sailing Instructions prior to the first boat reaching the Evergreen Point Floating Bridge. The shortened course shall require each boat to sail until their masthead is completely to the north side of the Bridge and return to the start/finish line off Leschi.

The winning boat will be calculated by PHRF rating. This changes RRS 32.2.

**Time Limit:** Boat *finishing* after 2400, August 12, 2023 will be scored DNF. This changes RRS 35.

**Other Provisions:**

- CYC Notice of Race General Conditions applies.
- A boat racing between sunset and sunrise shall carry navigation lights and U.S. Coast Guard (or applicable government entity) flares meeting day-night requirements not older than the expiration date.
- A boat shall have a VHF radio and monitor the RC channel per the Sailing Instructions throughout the race.
- Boats racing shall check in with the RC by VHF radio about 10 minutes before their scheduled start and acknowledge any course changes.

**Registration** Visit [CYC Seattle - Racing Calendar](#), click on the race day event link

**Confirmation:** Season Pass holders shall confirm by Thursday before the race date.



## **Notice of Race Lake Fall Regatta**

**Date:** Saturday September 9, 2023

**Location:** Lake Washington, starting and finishing lines off Leschi

**Classes:** J/24, Thunderbird, San Juan 24, Thistle and other centerboard and small keelboat classes with at least five boats may apply.

### **Event Schedule:**

#### **Saturday**

- 0900 – 0930 Late Check Ins
- 0930 – 0945 Competitor's briefing
- 1100 First warning signal
- 1600 No warning signal after this time

After race social gathering at regatta site

**Courses:** Typically, windward / leeward and may include gates, offsets and gybe marks. At least four and up to six races may be available, usually 20 to 40 minutes in duration.

**Scoring:** Total of a boat's race score. If six or more races are completed, the worst score for a boat will be excluded. This changes RRS A2.1

**Time Limit:** 60 minutes for the first boat in class and other boats must finish 20 minutes after the first finisher.

**Registration:** Visit [CYC Seattle - Lake Fall Regatta](#) to register

**Confirmation:** Season Pass holders shall confirm their attendance by Thursday before the race



## Notice of Race Frigid Digits Regatta

**Date:** January 21-22, 2023 (Saturday and Sunday)

**Location:** Puget Sound off Shilshole

**Classes:** RS Aero, Laser, Laser Radial, Laser 4.7, Optimist and other centerboard classes with at least five boats may apply.

### Event Schedule:

#### Saturday

1030 – 1045	Competitor's briefing
1115 – 1145	Practice starts (when available)
1200	First warning signal

All racers are welcome at the Clubhouse by invitation of CYC Commodore.  
Food & beverage available for purchase.

#### Sunday

1015 – 1045	Practice starts (when available)
1100	First warning signal
1600	No warning signal after this time After racing Awards party at clubhouse

**Courses:** Courses will typically be windward / leeward and may include gates, offsets, and gybe marks. Four to six races are targeted for each day. Target race duration is 20 to 40 minutes.

**Scoring:** A boat's series score will be the total of her race scores, except that a boat's worst score will be excluded if six or more races are completed. This changes RRS A2.1. One race will constitute a series.

**Time Limit:** 60 minutes for the first boat in class to *finish*. Other boats must *finish* within 20 minutes of the first boat that *finishes*.

### Other Provisions:

- CYC Notice of Race General Conditions applies.
- Competitors must check in at CYC clubhouse prior to racing.
- The Seattle Laser Fleet Frigid Digit Regatta Perpetual Trophy will be awarded to the winner of the Laser (full rig) fleet.

**Awards:** Winner Name engraved on perpetual Frigid Digit Trophies

**Registration:** Visit [CYC Seattle - Racing Calendar](#), click on the race day event link

**Confirmation:** Season Pass holders shall confirm attendance by Thursday before the race.



## Notice of Race Center Sound Series

The Center Sound Series consists of three Saturday races:

Blakely Rock Race	March 4, 2023 (Saturday)
Race #2 – Course TBD	March 11, 2023 (Saturday)
Race #3 – Course TBD	March 25, 2023 (Saturday)

Historically, winds, currents, and weather all have been either very strong or very mild. Race Committee will choose the “best course” for the conditions to run a fair and enjoyable race of 3-5 hours.

**Classes:** PHRF-NW, IRC / ORC and other classes with at least five boats may apply. Monohull, multihull, and casual class boats will race in separate classes.

**Scoring:** Boats will be scored in class and overall. A boat's series score will be the total of her race scores with no scores excluded. This changes RRS A2.1. One race will constitute a series.

**Other Provisions:** CYC Notice of Race General Conditions applies

### Awards:

Each Race: 1<sup>st</sup>, 2<sup>nd</sup>, and 3<sup>rd</sup> in class. Series: 1<sup>st</sup> overall per course, 1<sup>st</sup>, 2<sup>nd</sup>, 3<sup>rd</sup> in class.

### Permanent Trophies:

The Werner Ohmes Foghorn Trophy for overall series winner will be awarded at the CYC Annual Party. The Werner Ohmes Foghorn Trophy is awarded to the boat with the highest score calculated as follows: Boat score equals  $100(N + 1 - P) / (N + 1)$  points, where P is her place in her class for that race and N is the number of starters in her class for that race. A boat that does not finish scores  $(66) / (N + 1)$  points, a disqualified boat scores  $(33) / (N + 1)$  points, and a boat that does not start scores 0 points. A boat's overall score is the sum of her scores in all races for the series.

**Registration:** Visit [CYC Seattle - Racing Calendar](#), click on the race day event link

**Confirmation:** Season Pass holders shall confirm their attendance by Thursday before the race date

**Moorage:** Guest moorage is available at Shilshole Bay Marina. Call the marina office at 206-787-3006, use VHF 17, or after hours at 206-601-4089. For more information, see the Notice of Race for each race in the series.





## Notice of Race

### Center Sound Series Race 1: Blakely Rock Race

**Date:** Saturday, March 4, 2023

**Location:** Puget Sound, starting and finishing lines in Shilshole Bay.

**Classes:** PHRF-NW, IRC / ORC and other classes with at least five boats may apply. Monohull, multihull, and casual class boats will race in separate classes.

#### Event Schedule:

##### Saturday

1000 First warning signal

1400 No warning signal after this time

All racers are welcome at the Clubhouse by invitation of CYC Commodore.

**Course (Racing Classes):** Course distance ~ 21 NM.

North Wind: Start by leaving the starting mark buoy to port, round mark "N" to port, round mark "K" to port, and finish by leaving the finishing mark buoy to port. Course distance ~ 21 NM.

South Wind: Start by leaving the starting mark buoy to starboard, round mark "K" to starboard, round mark "N" to starboard, and finish by leaving the finishing mark buoy to starboard.

An alternate course may be posted by the Race Committee, weather depending.

**Course (Non-Flying Sails Classes):** Course distance ~ 12 NM.

North Wind: Start by leaving the starting mark buoy to port, round mark "N" to port, round mark "W" to port, and finish by leaving the finishing mark buoy to port. Course distance ~ 12 NM.

South Wind: Start by leaving the starting mark buoy to starboard, round mark "W" to starboard, round mark "N" to starboard, and finish by leaving the finishing mark buoy to starboard.

An alternate course may be posted by the Race Committee, weather depending.

**Time Limit:** Eight hours for the first boat in class. Other boats must finish the later of 8 hours or 1 hour after the first boat that finishes.

#### Other Provisions:

- CYC Notice of Race General Conditions applies.
- Boats must comply with equipment requirement category SER Nearshore, as amended in the General Condition NOR and Appendices in this Race Book.
- This race is part of the CYC Center Sound Series.

**Awards:** For the race, 1<sup>st</sup>, 2<sup>nd</sup>, and 3<sup>rd</sup> in class.

**Registration:** Visit [CYC Seattle - Racing Calendar](#), click on the race day event link

**Confirmation:** Season Pass holders shall confirm participation by Thursday before the race date



## Notice of Race

### Center Sound Series: Race #2

**Date:** Saturday, March 11, 2023

**Location:** Puget Sound, starting and finishing lines in Shilshole Bay.

**Classes:** PHRF-NW, IRC / ORC and other classes with at least five boats may apply. Monohull, multihull, and casual class boats will race in separate classes.

#### Event Schedule:

##### Saturday

1000 First warning signal

1400 No warning signal after this time

All racers are welcome at the Clubhouse by invitation of CYC Commodore.

**Course: (Racing & Non-Flying Sails Classes):** Race Committee will choose the “best course” for the conditions to run a fair and enjoyable race of 3-5 hours.

**Time Limit:** Eight hours for the first boat in class. Other boats must finish 8 hours after they start or 1 hour after the first boat finishes.

#### Other Provisions:

- CYC Notice of Race General Conditions applies.
- Boats must comply with equipment requirement category SER Nearshore, as amended in the General Conditions NOR and Appendices in this Race Book.
- This race is part of the CYC Center Sound Series.

**Awards:** For the race, 1<sup>st</sup>, 2<sup>nd</sup>, and 3<sup>rd</sup> in class. Party and awards at the CYC clubhouse after racing. Overall awards for the Center Sound Series presented after CSS Race #3.

**Registration:** Visit [CYC Seattle - Racing Calendar](#), click on the race day event link

**Confirmation:** Season Pass holders shall confirm their attendance by Thursday before the race date



## Notice of Race Center Sound Series: Race #3

**Date:** Saturday March 25, 2023

**Location:** Puget Sound, starting and finishing lines in Shilshole Bay.

**Classes:** PHRF-NW, IRC/ORC and other classes with at least five boats may apply. Monohull, multihull, and casual class boats will race in separate classes.

### Event Schedule:

#### Saturday

1000 First warning signal

1400 No warning signal after this time

All racers are welcome at the Clubhouse for Awards by invitation of CYC Commodore.

### Course (All Classes):

Race Committee will choose the “best course” for the conditions to run a fair and enjoyable race of 3-5 hours.

**Time Limit:** 8 hours for the first boat in class. Other boats must *finish* 8 hours or 1 hour after the first boat *finishes*.

### Other Provisions:

- CYC Notice of Race General Conditions applies.
- Boats must comply with equipment requirement category SER Nearshore, as amended in the General Conditions NOR and Appendices in this Race Book.
- This race is part of the CYC Center Sound Series.

**Awards:** For the race, 1<sup>st</sup>, 2<sup>nd</sup>, and 3<sup>rd</sup> in class. Party at the CYC clubhouse and awards for overall Center Sound Series will be presented after this race.

**Registration:** Visit [CYC Seattle - Racing Calendar](#), click on the race day event link

**Confirmation:** Season Pass holders shall confirm their participation by Thursday before the race date



## Notice of Race

### CYC Spring Regatta – Big Boats

**Date:** April 15-16, 2023 (Saturday and Sunday)

**Location:** Puget Sound off Shilshole.

**Classes:** PHRF-NW, IRC / ORC, Farr 30, J/105, Melges 24, Star, J/80, J/24, Thunderbird, San Juan 24 and other keelboat classes with at least five boats may apply.

#### Event Schedule:

##### Saturday

0900 – 0930	Late check in
0930 – 0945	Competitor's briefing
1015 – 1045	Practice starts (when available)
1100	First warning signal

All racers are welcome at the Clubhouse by invitation of CYC Commodore.

##### Sunday

1015 – 1045	Practice starts (when available)
1100	First warning signal
1600	No warning signal after this time

All racers are welcome at the Clubhouse by invitation of CYC Commodore

**Courses:** Courses will typically be windward / leeward and may include gates, offsets, and gybe marks. Four to six races are targeted for each day. Target race duration is 20 to 60 minutes.

**Scoring:** A boat's series score will be the total of her race scores. If six or more races are completed, a boat's worst score will be excluded. This changes RRS A2.1. One race will constitute a series.

**Time Limit:** Ninety minutes for the first boat in class to *finish*. Other boats must *finish* within 20 minutes of the first boat that *finishes*.

#### Other Provisions:

- CYC Notice of Race General Conditions applies.
- Boats racing in handicap classes must comply with equipment requirement category SER Nearshore, as amended in the General Conditions NOR and Appendices in this Race Book. These requirements do not apply to boats racing in one design classes.

**Registration:** Visit [CYC Seattle - Racing Calendar](#), click on the race day event link

**Confirmation:** Season Pass holders shall confirm participation by Thursday before the race date

**Guest Moorage & Dry Storage:** The Shilshole Marina north parking lot adjacent to the dry storage area will be available for guest dry storage. A limited amount of free guest moorage will be available to race boats between piers W and X.





## Notice of Race

### CYC Spring Regatta – Small Boat

**Date:** April 22-23, 2023 (Saturday and Sunday)

**Location:** Puget Sound off Shilshole.

**Classes:** F18, I-14, 505, Thistle, Tasar, Vanguard 15, RS Aero, Laser, Snipe, Optimist and other centerboard and small keelboat classes with at least five boats may apply.

#### Event Schedule:

##### Saturday

0900 – 0930	Late check in
0930 – 0945	Competitor's briefing
1015 – 1045	Practice starts (when available)
1100	First warning signal

All racers are welcome at the Clubhouse by invitation of CYC Commodore.

##### Sunday

1015 – 1045	Practice starts (when available)
1100	First warning signal
1600	No warning signal after this time

All racers are welcome at the Clubhouse by invitation of CYC Commodore

**Courses:** Courses will typically be windward / leeward and may include gates, offsets, and gybe marks. Four to six races are targeted for each day. Target race duration is 20 to 60 minutes.

**Scoring:** A boat's series score will be the total of her race scores. If six or more races are completed, a boat's worst score will be excluded. This changes RRS A2.1. One race will constitute a series.

**Time Limit:** Ninety minutes for the first boat in class to *finish*. Other boats must *finish* within 20 minutes of the first boat that *finishes*.

**Other Provisions:** CYC Notice of Race General Conditions applies.

**Registration:** Visit [CYC Seattle - Racing Calendar](#), click on the race day event link

**Confirmation:** Season Pass holders shall confirm their participation by Thursday before the race date

**Guest Moorage and Dry Storage:** The Shilshole Marina north parking lot adjacent to the dry storage area will be available for guest dry storage. A limited amount of guest moorage will be available between piers W and X.



## Notice of Race Wednesday & Thursday Evening Series

**Date:** There are four Wednesday series and four Thursday series:

Series	Wednesday	Thursday
Spring	Apr 19, 26, May 3, 10 & 17	Apr 20, 27, May 4, 11, & 18
Solstice	May 24, 31, Jun 7, 14 & 21	May 25, Jun 1, 8, 15, & 22
Summer	Jul 5, 12, 19, 26 & Aug 2	Jul 6, 13, 20, 27 & Aug 3
Fall	Aug 9, 16, 23, 30, Sep 6 & 13	Aug 10, 17, 24, 31 Sep 7 & 14

**Location:** Puget Sound off Shilshole

**Classes:**

**Wednesdays:** PHRF-NW, IRC/ORC, Farr 30, J/105, Melges 24, Star, J/80, Star and other keelboat classes with at least five boats may apply.

**Thursdays:** F18, I-14, 505, Thistle, Tasar, Vanguard 15, RS Aero, Laser, Snipe, Optimist, and other centerboard classes with at least five boats may apply.

**Event Schedule:**

- 1730 – 1800 Practice starts (when available)
- 1815 First warning signal
- Sunset No warning signal after this time

All racers are welcome at the Clubhouse by invitation of CYC Commodore.

**Courses:** Courses will typically be windward / leeward and may include gates, offsets, and gybe marks. Two to four races are targeted for each day. Target race duration is 20 to 60 minutes.

**Scoring:** A boat's series score will be the total of her race scores, except that a boat's worst score will be excluded if at least six races are completed, and two scores will be excluded if at least twelve races are completed. This changes RRS A2.1. One race constitutes a series.

**Time Limit:** Ninety minutes for the first boat in class to *finish*. Other boats must *finish* within 20 minutes of the first boat that *finishes*.

**Other Provisions:** CYC Notice of Race General Conditions applies

**Registration:** Eligibility CYC Adult/Family, Senior, Honorary Life, and Junior members  
~Prospective members may race in these series for up to 12 months~

**Awards:** Presented at the end of each series.



## Notice of Race J / Fest 2023

**Date:** June 10 and 11, 2023 (Saturday and Sunday)

**Location:** Puget Sound off Shilshole Bay and Meadow Point.

**Registration Deadline:** 5:00 PM Friday June 9th

**Classes:** The event is limited to J/Boats. Starts will be provided for One-Design, PHRF and Cruising classes. One-design class fleet starts will be offered for J/Boat classes with 5 or more boats entered. Entries for handicapped racing must have current PHRF-NW ratings.

### Schedule:

Saturday, June 10 All registrants welcome at the Clubhouse by invitation of the Commodore

0900 – 0930 Check-in and Coffee in CYC Clubhouse

1015 – 1045 Practice starts (when available)

1100 First warning signal

1830 Dinner at CYC clubhouse

Sunday, June 11

1015 – 1045 Practice starts (when available)

1100 First warning signal

1600 No warning signal after this time

After racing Awards party at CYC clubhouse

**Courses:** Courses will typically be windward/leeward and may include gates, offsets, and gybe marks. Four races or more are planned for each day. Target race duration is 40 to 60 minutes.

**Scoring:** A boat's series score will be the total of her race scores, except that a boat's worst score will be excluded if six or more races are completed. This changes RRS A2.1. One race will constitute a series.

**Time Limit:** Ninety minutes for the first boat in class to *finish*. Other boats must *finish* within 30 minutes of the first boat that *finishes*. This changes RRS 35.

### Other Provisions:

- CYC Standard Notice of Race applies.
- Boats racing in handicap classes must comply with equipment requirement category SER Nearshore, as amended in the Standard NOR and Appendices in the 2023 CYC Race Book. These requirements do not apply to boats racing in one design classes.

**Registration Fee:** Entry Fee \$150 per boat includes 2 Dinner Tickets for Saturday evening

A \$25 late fee will be assessed for registrations after 12:00 Noon, Wednesday June 7<sup>th</sup>.

**Guest Moorage and Dry Storage:** The Shilshole Marina north parking lot adjacent to the dry storage will be available for race boat & trailer parking. A limited amount of free guest moorage is available between piers W and X for Friday June 9 and Saturday June 10<sup>th</sup>.



## Notice of Race Commodore & Gibson Races

This time honored CYC weekend race / cruise begins with the Commodore Race from Shilshole to Port Ludlow on Saturday and ends with the Gibson Race from Port Ludlow back to Shilshole on Sunday. Potluck dinner Saturday night.

Starts shall be in the reverse order of PHRF-NW ratings with handicaps applied by adjusting the start times for each boat. Boats without a 2023 PHRF rating may be assigned a rating at time of registration.

Visit [CYC Seattle - Cruising Calendar](#) for more detail.

**Date:** August 5<sup>th</sup> & 6<sup>th</sup> (Saturday and Sunday)

**Location:** Puget Sound from Shilshole to Port Ludlow

### Event Schedule:

Saturday	First warning at 1000 for the start of the slowest rated boat
Sunday	First warning at 1100 for the start of the slowest rated boat

### Courses:

#### Commodore Race (Saturday):

**Start at Meadow Point Buoy (Lighted Buoy #1) and finish at Foulweather Bluff Buoy (Lighted Bell Buoy #2).**

**Course distance:** 17.5 NM, used for handicap calculations

#### Gibson Race (Sunday):

**Start at Foulweather Bluff Buoy and finish at Meadow Point Buoy.**

**Course distance:** 17.5 NM, used for handicap calculations

The Saturday finish and Sunday start location may be changed to the Point No Point Lighthouse by notice on the day of each race.

**Time Limit:** 1700 on Saturday and 1900 on Sunday.

**Moorage:** Call Port Ludlow Marina, 360-437-0513 and ask for reservations with CYC group so you will be assigned a slip with other CYC boats. Contact Port Ludlow to reserve a specific slip with credit card before July 15 as event slips will open to the public 3 weeks prior to the race.

**Registration:** Visit [CYC Seattle - Racing Calendar](#), click on the race day event link

**Contact:** Al Johnson; [ajohnson1101@gmail.com](mailto:ajohnson1101@gmail.com)



## Notice of Race

### CYC Midnight Run 2023

A **night race** starting Friday evening September 15th with courses and class breaks designed for a midday finish on Saturday September 16th. Dock-side socializing at Cap Sante Marina post-race. Saturday night moorage has been arranged. Entrants must include the moorage fees, per the posted rate schedule in this Notice of Race, with their entry fee to CYC.

**Date:** September 15 and 16, 2023 (Friday and Saturday)

**Location:** Puget Sound to Rosario Strait via Straits of Juan de Fuca and San Juan Islands

**Classes:** The event is open to all keelboats that have current PHRF or ORC ratings.

#### Registration Fee:

Early Entry Fee before September 1st    \$80 plus Moorage Fee (see below for details)  
Registration after September 1<sup>st</sup>        \$95 plus Moorage Fee (see below for details)

**Registration Deadline:** 5:00 PM the Friday before racing or until all Cap Sante moorage slips are full.

#### Event Schedule:

##### Friday, September 15th

16:30-19:30    Bar Open  
18:30            Division 3: First warning signal for boats with PHRF ratings 51 or higher  
19:30            Division 2: First warning signal for boats with PHRF ratings 51 or lower  
20:30            Division 1: First warning signal for ORC rated boats

Classes and start times may be adjusted depending on registered boats. No start will be before 18:30 or after 20:30

##### Saturday

16:30            Awards and food and beverage service on the dock at Cap Sante Marina

**Courses:** Courses will be selected from several options to be described in the Sailing Instructions based on the tides, weather at the start, and current forecast. Course options will range from 60 nm to 110 nm. Courses may also be varied to fit the rating band of the various fleets. Courses will be posted by 1200 on Friday, September 15.

**Scoring:** Boats will be scored either as PHRF Time on Time

**Time Limit:** 16:00 Saturday afternoon

#### Other Provisions:

- CYC Standard Notice of Race applies.
- Boats racing in handicap classes must comply with equipment requirement category SER Nearshore, as amended in the Standard NOR and Appendices in this Racebook
- Skippers and crew are invited to enjoy the CYC Clubhouse facilities as guests of the Commodore on the Friday evening prior to the start.
- CYC has reserved 30 guest slips at Cap Sante Marina and a covered social barge for Friday evening. Moorage must be pre-paid. Refreshments will be available to finishers on the barge.

**Saturday Night Moorage Fees:** CYC has master leased 30 slips for the event in the Cap Sante Marina.

- Cap Sante Marina has set aside 30 guest slips for this event, with **fees to be collected by CYC at time of registration.**
- Moorage for boats 50' or less: \$1.74 per foot, plus \$6.00 for power.
- Moorage for boats 51' or more: \$2.15 per foot, plus \$6.00 for power.



## Notice of Race

### Puget Sound Sailing Championship - Small Boat

**Date:** Saturday, September 30 & Sunday October 1, 2023

**Location:** Puget Sound off Shilshole.

**Classes:** F18, I-14, 505, J/24, Thistle, Tasar, Vanguard 15, RS Aero, Laser, Snipe, Optimist. Other centerboard and small keelboat classes with at least five boats may apply.

#### Event Schedule:

##### Saturday

0900 – 0930 Late check in for One Design  
0930 – 0945 Competitor's briefing  
1015 – 1045 Practice starts (when available)  
1100 First warning signal

All racers are welcome at the Clubhouse by invitation of CYC Commodore.

##### Sunday

1015 – 1045 Practice starts (when available)  
1100 First warning signal  
1600 No warning signal after this time

All racers are welcome at the Clubhouse for Awards by invitation of CYC Commodore.

**Courses:** Courses will typically be windward / leeward and may include gates, offsets, and gybe marks. Four to six races are targeted for each day. Target race duration is 20 to 60 minutes.

**Scoring:** A boat's series score will be the total of her race scores with no scores excluded. This changes RRS A2.1. One race constitutes a series.

**Time Limit:** Ninety minutes for the first boat in class to *finish*. Other boats must *finish* within 30 minutes of the first boat that *finishes*.

**Other Provisions:** CYC Notice of Race General Conditions applies

**Registration:** Visit [CYC Seattle - Racing Calendar](#), click on the race day event link

**Confirmation:** Season Pass holders must confirm participation by Thursday before the race date

**Guest Moorage and Dry Storage:** The Shilshole Marina north parking lot, adjacent to the dry storage area, will be available for guest dry storage. A limited amount of included guest moorage will be available between piers W and X.





## Notice of Race

### Puget Sound Sailing Championships - Big Boat

**Date:** Saturday, October 14 & Sunday, October 15, 2023

**Classes:** PHRF-NW, IRC/ORC, Farr 30, Star, J/105, Melges 24, J/80, Thunderbird, San Juan 24, and other keelboat classes with at least five boats may apply.

#### Event Schedule:

##### Friday

1800 Clubhouse Social Skipper Meeting (not mandatory)  
Chalk Talk on Race Management with Guest PRO Don Weinke

##### Saturday

1015 – 1045 Practice starts (when available)

1100 First warning signal

All racers are welcome at the Clubhouse by invitation of CYC Commodore.

##### Sunday

1015 – 1045 Practice starts (when available)

1100 First warning signal

1600 No warning signal after this time

All racers are welcome at the Clubhouse by invitation of CYC Commodore for Awards.

**Courses:** Courses will typically be windward / leeward and may include gates, offsets, and gybe marks. Four to six races are targeted for each day. Target race duration is 20 to 60 minutes.

**Scoring:** A boat's series score will be the total of her race scores with no scores excluded. This changes RRS A2.1. One race will constitute a series.

**Time Limit:** Ninety minutes for the first boat in class to *finish*. Other boats must *finish* within 20 minutes of the first boat that *finishes*.

#### Other Provisions:

- CYC Notice of Race General Conditions applies.
- Keelboats racing in handicap classes must comply with equipment requirement category USSER Nearshore, as amended. These requirements do not apply to boats racing in one design classes.

**Registration:** Visit <https://cycseattle.org/event-5408767>

**Confirmation:** CYC Season Pass please confirm participation by Thursday before the race

**Guest Moorage and Dry Storage:** Shilshole Marina north parking lot adjacent to the dry storage area will be available for guest dry storage. A limited amount of included guest moorage will be available between piers W and X.



# Notice of Race Turkey Bowl Regatta

**Date:** Saturday, November 18 and Sunday November 19, 2023

**Location:** Puget Sound off Shilshole.

**Classes:** F18, I-14, 505, Star, Thistle, Tasar, Vanguard 15, RS Aero, Laser, Snipe, Optimist and other centerboard and small keelboat classes with at least five boats may apply.

**Event Schedule:**

**Saturday**

- 0900 – 0930 Late check in
- 0930 – 0945 Competitor's briefing
- 1015 – 1045 Practice starts (when available)
- 1100 First warning signal

All racers are welcome at the Clubhouse by invitation of CYC Commodore.

**Sunday**

- 1015 – 1045 Practice starts (when available)
- 1100 First warning signal
- 1600 No warning signal after this time

All racers are welcome at the Clubhouse by invitation of CYC Commodore.

**Courses:** Courses will typically be windward / leeward and may include gates, offsets, and gybe marks. Four to six races are targeted for each day. Target race duration is 20 to 60 minutes.

**Scoring:** A boat's series score will be the total of her race scores, except that a boat's worst score will be excluded if six or more races are completed. This changes RRS A2.1. One race will constitute a series.

**Time Limit:** 60 minutes for the first boat in class to *finish*. Other boats must *finish* within 20 minutes of the first boat that *finishes*.

**Other Provisions:** CYC Notice of Race General Conditions applies

**Registration:** <https://cycseattle.org/event-5450863>

**Confirmation:** Season Pass holders shall confirm their participation by Thursday before the race

**Appendix 1****US Sailing Safety Equipment Requirements (SER)  
Nearshore Category as Amended by the CYC Notice of Race**

<b>Section Name</b>	<b>#</b>	<b>Requirement</b>	<b>Nearshore</b>
Definition	1.0.3	Nearshore: Races primarily sailed during the day, close to shore, in relatively protected waters	Required
Overall: Responsibility	1.2	The safety of a boat and her crew is the sole and inescapable responsibility of the "person in charge", as per RRS 46, who shall ensure that the boat is seaworthy and manned by an experienced crew with sufficient ability and experience to face bad weather. S/he shall be satisfied as to the soundness of hull, spars, rigging, sails and all gear. S/he shall ensure that all safety equipment is at all times properly maintained and safely stowed and that the crew knows where it is kept and how it is to be used.	Required
Overall: Responsibility	1.2.1	Should there be an incident during a race the Organizing Authority or US Sailing may conduct an investigation to determine the facts of the incident and provide recommendations. By participating in a race conducted under the SER, the person in charge, each competitor and boat owner agrees to reasonably cooperate with the organizing authority and US Sailing in the development of an independent incident report.	Required
Overall: Inspections	1.3	A boat may be inspected at any time by an equipment inspector or measurer appointed for the event. If she does not comply with these regulations, her entry may be rejected, or she will be subject to a protest filed by the RC. A Violation of the Safety Equipment Requirements may result in a penalty other than disqualification.	Required
Overall: Equipment and Knowledge	1.4	All equipment required shall function properly, be regularly checked, cleaned and serviced, and be of a type, size and capacity suitable for the intended use and size of the boat and the size of the crew. This equipment shall be readily accessible while underway and, when not in use, stored in such a way that deterioration is minimized.	Required
Overall: Secure Storage	1.5	A boat's heavy items such as batteries, stoves, toolboxes, anchors, chain and internal ballast shall be secured.	Required
Overall: Watertight Integrity	1.7	A boat's hull, including, deck, coach roof, windows, hatches and all other parts, shall form an integral watertight unit, and any openings in it shall be capable of being immediately secured to maintain this integrity.	Required

**Appendix 1****US Sailing Safety Equipment Requirements (SER)  
Nearshore Category as Amended by the CYC Notice of Race**

## Appendix 1

### US Sailing Safety Equipment Requirements (SER) Nearshore Category as Amended by the CYC Notice of Race

Section Name	#	Requirement	Nearshore
Hull and Structure: Stability	2.2.3	A boat with moveable or variable ballast (water or canting keel) shall comply with the requirements of Appendix K.	Required
Hull and Structure: Lifelines	2.4.1	A boat's deck including the headstay shall be surrounded by a suitably strong enclosure, typically consisting of lifelines and pulpits, meeting the requirements in 2.4.2 to 2.4.8. <b>Does not apply for boats under 9 meters (29 ft) or boats under 12 meters (38 ft) with crew position inboard except briefly to perform a necessary task.</b>	CYC Required NOR 3.2(a)
Hull and Structure: Lifelines	2.4.2	A boat's stanchion and pulpit bases shall be within the working deck.	CYC Required NOR 3.2(a)
Hull and Structure: Lifelines	2.4.3	Bow pulpits may be open, but the opening between the vertical portion of stanchion pulpit and any part of the boat shall not exceed 14.2" (360mm).	CYC Required NOR 3.2(a)
Hull and Structure: Lifelines	2.4.4	Lifelines shall be uncoated stainless steel wire. A multipart- lashing segment not to exceed 4" per end termination for the purpose of attaching lifelines to pulpits is allowed. Lifelines shall be taut. <b>Exception: While wire is recommended for durability, if the person in charge believes it to be safer for the crew, lifelines may be high molecular weight polyethylene (HMPE) line with spliced terminations or terminals specifically intended for the purpose. When HMPE is used, the load-bearing portion (core) shall meet or exceed minimum diameter requirements.</b>	CYC Required NOR 3.2(b)
Hull and Structure: Lifelines	2.4.4.1	Lifeline deflection shall not exceed the following: a) When a deflecting force of 9 lbs (40N) is applied to a lifeline midway between supports of an upper or single lifeline, the lifeline shall not deflect more than 2" (50mm). This measurement shall be taken at the widest span between supports that are aft of the mast. b) When a deflecting force of 9 lbs (40N) is applied midway between supports of an intermediate lifeline of all spans that are aft of the mast, deflection shall not exceed 5" (120mm) from a straight line between the stanchions	CYC Required NOR 3.2(a)
Hull and Structure: Lifelines	2.4.5	The maximum spacing between lifeline supports (e.g. stanchions and pulpits) shall be 87" (2.2m).	CYC Required NOR 3.2(a)

## Appendix 1

### US Sailing Safety Equipment Requirements (SER) Nearshore Category as Amended by the CYC Notice of Race

**Appendix 1****US Sailing Safety Equipment Requirements (SER)  
Nearshore Category as Amended by the CYC Notice of Race**

<b>Section Name</b>	<b>#</b>	<b>Requirement</b>	<b>Nearshore</b>
Hull and Structure: Lifelines	2.4.6	Boats under 30' (9.14m) shall have at least one lifeline with 18" (457mm) minimum height above deck, and a maximum vertical gap of 18" (457mm). Taller heights will require a second lifeline. The minimum diameter shall be 1/8" (3mm).	CYC Required NOR 3.2(a)
Hull and Structure: Lifelines	2.4.7	Boats 30' and over (9.14m) shall have at least two lifelines with 24" (762mm) minimum height above deck, and a maximum vertical gap of 15" (381mm). The minimum diameter will be 5/32" (4mm) for boats to 43' (13.1m) and 3/16" (5mm) for boats over 43' (13.1m).	CYC Required NOR 3.2(a)
Hull and Structure: Lifelines	2.4.8	Toe rails shall be fitted around the foredeck from the base of the mast with a minimum height of 3/4" (18mm) for boats under 30' (9.14m) and 1" (25mm) for boats over 30'. An additional installed lifeline that is 1-2" (25-51mm) above the deck will satisfy this requirement for boats without toe rails.	CYC Required NOR 3.2(a)
Hull and Structure: Lifelines	2.4.9	Trimarans are exempted from the lifeline requirement where there is a trampoline outboard of the main hull, except that a lifeline must run from the top of a bow pulpit to the forward crossbeam at the outboard edge of the bow net or foredeck. Catamarans with trampoline nets between the hulls are exempted from the lifeline requirement. All catamarans are exempted from the need for pulpits and lifelines across the bow.	CYC Required NOR 3.2(a)
Hull and Structures: Dewatering pumps	2.5.3	A boat shall have a manual bilge pump of at least a 10 GPM (37.8 liter per minute) capacity.	Required
Hull and Structure: Mechanical Propulsion	2.7.2	A boat shall have a mechanical propulsion system that is quickly available and capable of driving the boat at a minimum speed in knots equivalent to the square root of LWL in feet (1.8 times the square root of the waterline in meters) for 4 hours.	CYC Required NOR 3.2(c)
Safety Equipment: Personal	3.1.3	Each crew member shall have a life jacket intended for small boat sailing or other active boating. Each such life jacket shall be USCG, ISO, or applicable government approved or shall meet the ocean requirement of 3.1.1.	Required
Safety Equipment: Navigation Lights	3.3.1	A boat racing between sunset and sunrise shall carry navigation lights that meet U. S. Coast Guard or applicable government requirements mounted so that they will not be obscured by the sails nor be located below deck level.	Required

**Appendix 1****US Sailing Safety Equipment Requirements (SER)  
Nearshore Category as Amended by the CYC Notice of Race**

**Appendix 1****US Sailing Safety Equipment Requirements (SER)  
Nearshore Category as Amended by the CYC Notice of Race**

<b>Section Name</b>	<b>#</b>	<b>Requirement</b>	<b>Nearshore</b>
Safety Equipment: Fire Extinguishers	3.4	A boat shall carry fire extinguisher(s) that meets U.S. Coast Guard or applicable government requirements, when applicable.	Required
Safety Equipment: Sound Producing Equipment	3.5	A boat shall carry sound-making devices that meets U.S. Coast Guard or applicable government requirements, when applicable.	Required
Safety Equipment: Visual Distress Signals	3.6.6	A boat shall carry U.S. Coast Guard (or applicable government entity) flares meeting day-night requirements not older than the expiration date.	Required
Safety Equipment: Man Overboard	3.7.2	A boat shall have a lifebuoy with a whistle, and a drogue attached. A self-igniting light must also be attached when sailing between sunset and sunrise. A man overboard pole, self-inflating Man Overboard Module, Dan Buoy or similar device will satisfy this requirement. Self-inflating apparatus shall be tested and serviced in accordance with the manufacturer's specifications. These items shall be stored on deck, ready for immediate use, and affixed in a manner that allows for a "quick release".	CYC Required NOR3.7(d)
Safety Equipment: Man Overboard	3.7.3	A boat shall have a throwing sock-type heaving line of 50' (15m) or greater of floating polypropylene line readily accessible to the cockpit.	Required
Safety Equipment: Man Overboard	3.7.4	A boat shall carry a Coast Guard or applicable government approved "throwable device". If the device carried under 3.7.1 or 3.7.2 satisfies this requirement, then no additional device is needed.	Required
Safety Equipment: Emergency Communications	3.8.3	A boat shall have a VHF radio which may be fixed or handheld.	Required
Safety Equipment: Navigation	3.19.1	A boat shall have a permanently mounted magnetic compass independent of the boat's electrical system suitable for steering at sea.	Required
Safety Equipment: Damage Control	3.22	A boat shall carry soft plugs of an appropriate material, tapered and of the appropriate size, attached or stowed adjacent to every through-hull opening.	CYC Required NOR 3.2(e)
Gear: Anchoring	3.23	A boat shall carry one anchor, meeting the anchor manufacturer's recommendations based on the yacht's size, with a suitable combination of chain and line.	Required
Gear: Lights	3.24.3	A boat shall carry at least two watertight flashlights with spare batteries in addition to the requirement of 3.24.1.	Required

**Appendix 1****US Sailing Safety Equipment Requirements (SER)  
Nearshore Category as Amended by the CYC Notice of Race**



---

**Appendix 1****US Sailing Safety Equipment Requirements (SER)  
Nearshore Category as Amended by the CYC Notice of Race**

---

<b>Section Name</b>	<b>#</b>	<b>Requirement</b>	<b>Nearshore</b>
Gear: Medical Kits	3.25	A boat shall carry a first aid kit and first aid manual suitable for the likely conditions of the passage and the number of crew aboard.	Required
Gear: Radar Reflectors	3.26	A boat shall carry an 11.5" (292mm) diameter or greater octahedral radar reflector or one of equivalent performance.	CYC Required NOR 3.2(f)
Gear: Dewatering	3.27.2	A boat shall carry one sturdy bucket of at least two gallons (8 liters) capacity with lanyards attached.	Required
Skills: Man Overboard	4.2	Annually, two-thirds of the boat's racing crew shall practice man-overboard procedures appropriate for the boat's size and speed. The practice shall consist of marking and returning to a position on the water and demonstrating a method of hoisting a crewmember back on deck, or other consistent means of reboarding the crewmember.	Required
Skills: Crew Training	4.4	As required in 1.2 above the person in charge shall ensure that all crew members know where all emergency equipment is located and how to operate the equipment. In addition, the person in charge and crew should discuss how to handle various emergency situations including Crew Overboard, Grounding, Loss of steering, Flooding, Fire, Dismasting, and Abandon Ship.	Required
Skills: Crew Training	4.6	Lifejackets as described in 3.1.1 – 3.1.3 should be worn by all crew on deck in any conditions where recovery may be difficult. It is recommended that lifejackets be worn by all crew on deck unless the person in charge has indicated that they may be set aside.	Required

---

---

**Appendix 1****US Sailing Safety Equipment Requirements (SER)  
Nearshore Category as Amended by the CYC Notice of Race**

## Appendix 2

### Puget Sound Sailboat Safety Regulations

2014 Revision as adopted by Corinthian Yacht Club of Seattle, Seattle Yacht Club, Shilshole Bay Yacht Club, and Sloop Tavern Yacht Club

We must share Puget Sound with its commercial traffic, including many deep-water vessels and tows. It is sobering to note that, if your boat is one mile dead-ahead of a freighter coming down the Sound at normal speed, and the freighter's helm is put hard over to avoid you, the freighter's bow will miss you, but her stern will not! Obviously, this implies that early and decisive action is required to keep your boat out of the path of a large oncoming vessel or tow. The requirements of this document may be incorporated into an event by reference in a notice of race.

1. Yachts must not sail across a tow line, too close ahead, or too close alongside commercial traffic. Deep water vessels have limited ability to change course and speed. Barges under tow can yaw unexpectedly well out to the side at speeds essentially the same as they are being towed. Yachts should not pass less than one mile ahead and 1/4 mile to the side of large vessels.
2. Rule 10 of the International and Inland Rules to Prevent Collisions at Sea (COLREGS) requires that no power-driven vessel less than 20 meters (66 feet) in length, and no sailing vessel (of any size) may impede the safe passage of a power-driven vessel following a Vessel Traffic System (VTS) Lane.
3. Rule 9 of the COLREGS requires that no power vessel of less than 20 meters (66 feet) in length and no sailing vessel (of any length) shall impede the safe passage of any vessel which can navigate only within a narrow channel or fairway. Puget Sound can be considered a "narrow channel" for most large commercial traffic. "Impede" means to cause to alter speed or course or to take evasive action.
4. A yacht in position where it may impede commercial traffic must exit from the "danger area" immediately, under auxiliary power if necessary. If power is used, it must be reported to the Race Committee at the finish line. Also, a written report must be made on a protest form, showing the location, time, duration of power use, speed, direction of exit, and that the competitive position of the yacht was not improved. If the last item cannot be demonstrated adequately, a time penalty may be imposed.
5. Navigation lights must be shown between sunset and sunrise as required by the International Rules of the Road.
6. Observed and/or reported violations of the safety regulations may be protested. The Race Committee shall have the option of issuing a "warning" when deemed appropriate. Warnings are recorded and may be considered when judging any future reports.

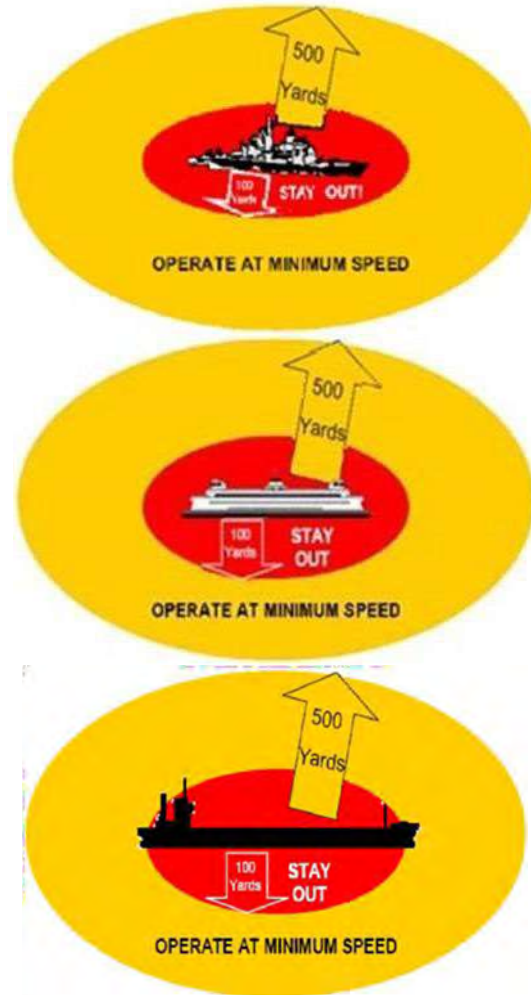
## Appendix 3

### US Coast Guard Warning

The following information was provided by the US Coast Guard.

**Do not approach within 100 yards of any Navy Vessel, Washington State Ferry, or Ship.** If you need to pass within 100 yards of these vessels in order to ensure a safe passage in accordance with the Navigation Rules, you must contact the ship on VHF-FM channel 16 or 13. (33 CFR 165.2030, 165.1317, 165.1313)

**You must operate at minimum speed within 500 yards of any of these vessel types.**



Violations of these Security Zones are a felony offense, punishable by up to 6 years in prison and/or up to \$250,000 in fines.

### US Marine Mammal Protection Act Provisions

- Stay 300 yards from orca on either side
- Stay 400 yards out of orcas path/in front and behind the whales
- Boats to go slow (<7 knots) within ½ mile of whales
- Disengage engines if whales appear within 300 yards

# Appendix 4

## Sector Puget Sound Vessel Traffic Service

Vessels less than 20 meters and sailing vessels are not required to participate with VTS, but if you do please follow the below guidelines:

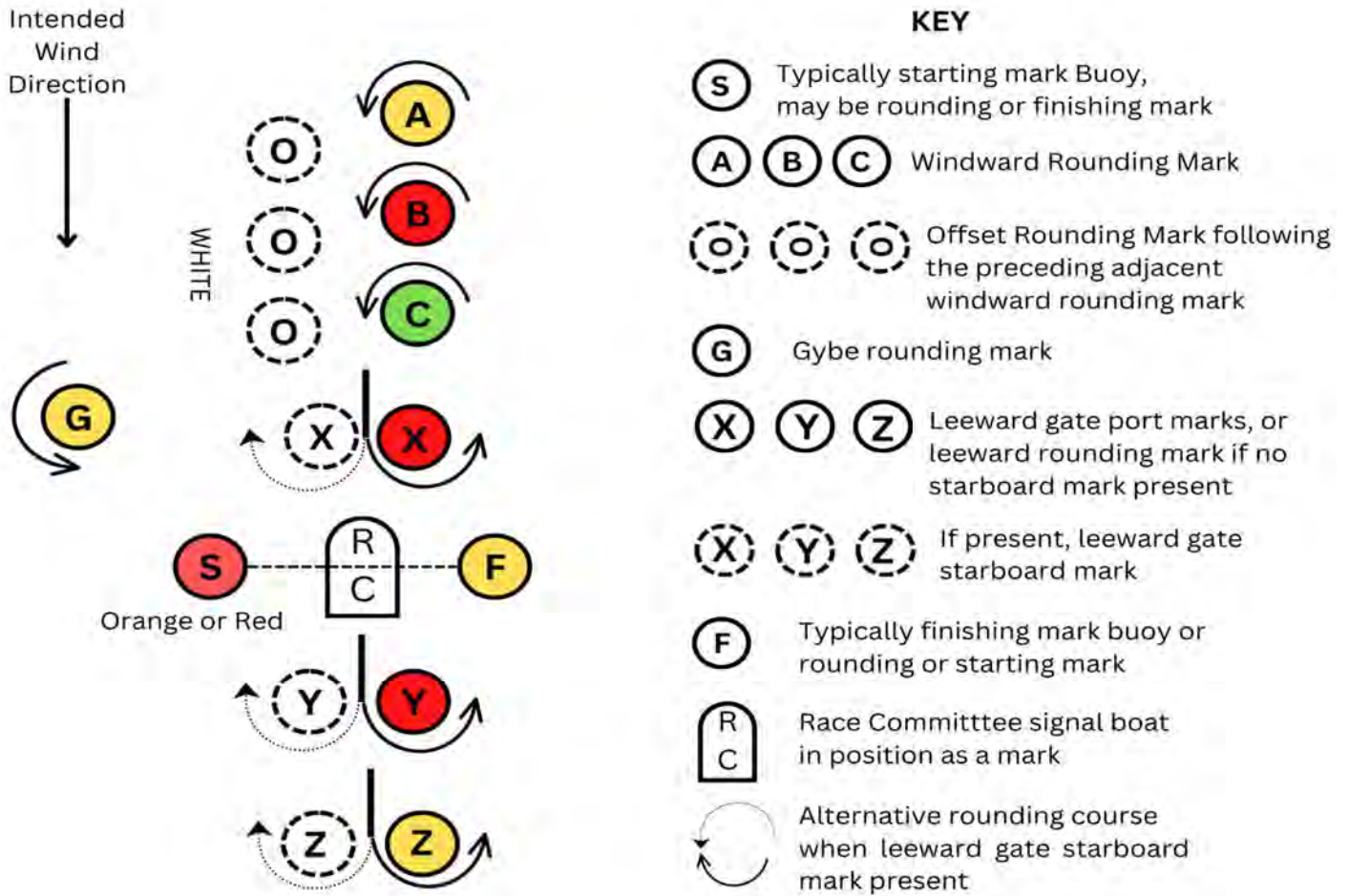
⇒ 13 Vessel bridge to bridge  
⇒ 16 International distress and calling

1. Monitor the appropriate VTS channel and limit communications to essential navigational safety.
2. Monitor Ch. 13
3. Monitor Ch. 16 and use in an emergency to contact the COAST GUARD.
4. If you only have a cell phone in an emergency call #206 217 6001 or 911.

For details on Canadian VTS (called MCTS) please visit:  
<http://www.coast-guard.gc.ca/Marine-Communications/Home>



## Mark Descriptions



### Buoy Course Marks (position relative to R/C)

The course diagram for buoy course marks shows the general orientation of the race committee signal boat ("R/C"), other marks (identified by the letters S, A, B, C, O, G, X, Y, Z and F), and the intended wind direction. All buoy course marks other than the race committee signal boat are inflatable buoys. Positions are approximate and the diagram is not to scale.

#### Notes:

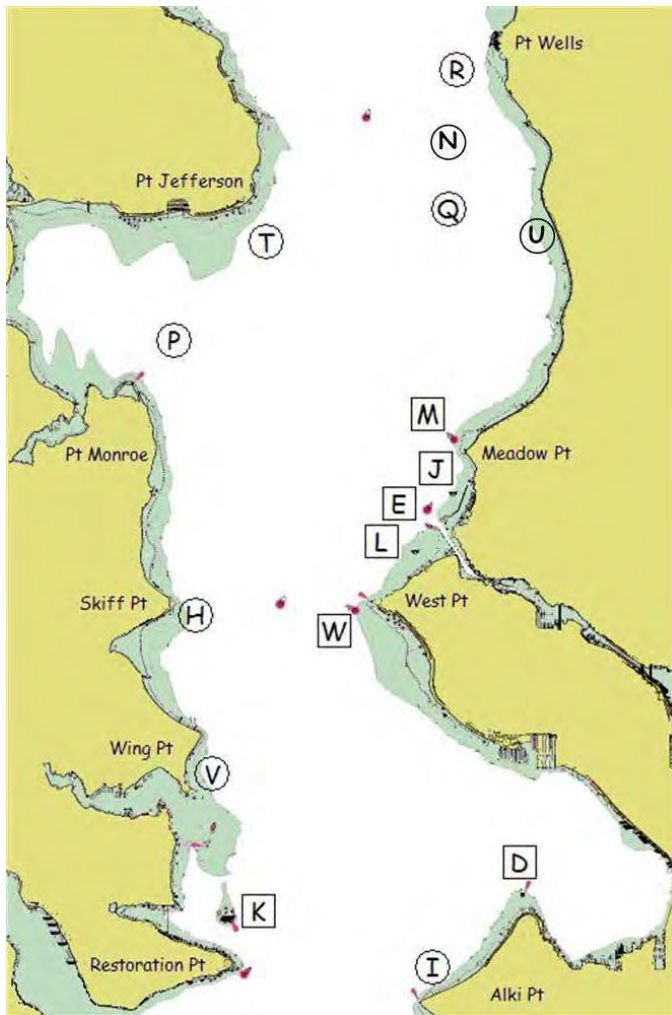
**S** When a starting mark for a downwind start, may be on either side of the race committee signal boat.

**XX** When XX is signaled in the course description, mark X may be a gate.

**YY** When YY is signaled in the course description, mark Y may be a gate.

**ZZ** When ZZ is signaled in the course description, mark Z may be a gate

## Geographic Marks (position based on location)



- ❖ Bearings are magnetic.
- ❖ Distances are nautical miles (NM).
- ❖ Bearings, distances, and positions are approximate.
- ❖ Each temporary mark is shown with its label in a circle.
- ❖ Each permanent mark is near its label in a square box.

- D** Duwamish Head Lt. (LL #16910)
- E** Shilshole Bay Entrance Lighted Buoy G "1" (LL #18125)
- H** Temporary mark 0.3 NM E of Skiff Pt.
- I** Temporary mark 0.5 NM N of Alki Pt.
- J** Round ball buoy with flag 0.25 NM SSW of marina N entrance
- K** Blakely Rock (LL #16830)
- L** White buoy 0.5 NM SW of marina S entrance
- M** Meadow Pt. Buoy (LL #16765)
- N** Temporary mark 1.5 NM E of Traffic Separation Lane Lighted Buoy SF (LL #16745)
- P** Temporary mark 0.5 NM NNE of Pt. Monroe
- Q** Temporary mark 3.0 NM bearing 340° from Meadow Pt. Buoy
- R** Temporary mark 0.5 NM SW of Pt. Wells
- T** Temporary mark 0.5 NM SE of Pt. Jefferson
- U** White spar buoy 2.9 NM bearing 6° from Meadow Pt. Buoy at 47° 44.4N, 122° 22.95W
- V** Temporary mark 0.3 NM NNE of Wing Pt.
- W** West Pt. Buoy (LL #16805)





## Race Organization Contacts

Fleet Captain	Steve Johnson	<a href="mailto:fleetcaptain-race@cycseattle.org">fleetcaptain-race@cycseattle.org</a>
Race Lake Protest Chair	Wayne Balsiger	<a href="mailto:lakeprotest@cycseattle.org">lakeprotest@cycseattle.org</a>
Sound Protest Chair	Jeff Snell	<a href="mailto:soundprotest@cycseattle.org">soundprotest@cycseattle.org</a>
PHRF Handicapper	Matthew Wood	<a href="mailto:matthewewood@outlook.com">matthewewood@outlook.com</a>

## Principle Race Officers (PROs)

Lake PRO	Troy Childs	<a href="mailto:tchilds@auburnnw.com">tchilds@auburnnw.com</a>
Sound PRO	Egor Klevak	<a href="mailto:comorado@gmail.com">comorado@gmail.com</a>
Senior PRO	Charley Rathkopf	<a href="mailto:charley-cyc@rathkopf.org">charley-cyc@rathkopf.org</a>
PRO-at-Large	Geoff Pease	<a href="mailto:cyc@pease.org">cyc@pease.org</a>

## CYC Business Members

These businesses are corporate members of Corinthian Yacht Club. Please thank them for their support and involvement in sailing.

