



# RACE BOOK

2020







*Sharing the Sailing Community*



*Hamachi* – 2019 Boat of the Year

Skipper: Shawn Dougherty

# Corinthian Yacht Club of Seattle Race Book 2020

Updated February 18, 2020

7755 Seaview Ave NW, Pier V  
Seattle, Washington 98117

[www.cycseattle.org](http://www.cycseattle.org) • 206.789.1919 • [office@cycseattle.org](mailto:office@cycseattle.org)

# Contents

|                                                                   |    |
|-------------------------------------------------------------------|----|
| Let's Go Sailing!.....                                            | 1  |
| About the Club.....                                               | 2  |
| Club Programs.....                                                | 3  |
| Racing Calendar.....                                              | 4  |
| Race Registration.....                                            | 5  |
| Entry Fees and Season's Passes.....                               | 6  |
| Lake Washington Racing.....                                       | 7  |
| Last Season's Regatta Winners.....                                | 7  |
| Notice of Race Lake Tuesday/Wednesday Evening Series.....         | 8  |
| Notice of Race Lake Washington Moonlight Poker Run Race.....      | 9  |
| Notice of Race Lake Fall Regatta.....                             | 10 |
| Puget Sound Racing.....                                           | 11 |
| Last Season's Regatta Winners.....                                | 11 |
| Notice of Race Frigid Digit Regatta.....                          | 12 |
| Notice of Race Center Sound Series.....                           | 13 |
| Notice of Race Center Sound Series: Blakely Rock Race.....        | 14 |
| Notice of Race Center Sound Series: Scatchet Head Race.....       | 15 |
| Notice of Race Center Sound Series: Three Tree Point Race.....    | 16 |
| Notice of Race Puget Sound Spring Regatta (Small Boat).....       | 17 |
| Notice of Race Puget Sound Spring Regatta (Big Boat).....         | 18 |
| Notice of Race Sound Wednesday/Thursday Evening Series.....       | 19 |
| Race Information CYC Commodore Gibson Cruise.....                 | 20 |
| Notice of Race Puget Sound Sailing Championship (Small Boat)..... | 21 |
| Notice of Race Puget Sound Sailing Championship (Big Boat).....   | 22 |
| Notice of Race Turkey Bowl Regatta.....                           | 23 |
| Appendix.....                                                     | 24 |
| CYC Notice of Race Addendum.....                                  | 24 |
| US Sailing US Safety Equipment Requirements (USSER).....          | 27 |
| Puget Sound Sailboat Safety Regulations.....                      | 31 |
| US Coast Guard Warning.....                                       | 32 |
| Contacts.....                                                     | 33 |
| Buoy Course Marks (relative positions).....                       | 34 |
| Puget Sound Geographic Marks (fixed positions).....               | 35 |

## On the Cover

CYC Center Sound Blakely Rock Race 2019

## Photo Credits

Cover: Jan Anderson, [janpix.smugmug.com](http://janpix.smugmug.com)  
Boat of the Year: Jan Anderson, [janpix.smugmug.com](http://janpix.smugmug.com)

## Let's Go Sailing!



Welcome to another season of **CYC Racing**. For many of us this is a huge part of our lives and one that helps define who we are. The combination of comradery, team building, strategy, tactics and persistence translates to good times and hard-earned victories on the water. I've been fortunate to have raced with several members for nearly twenty years and they've become an extension of my family.

The backdrop for our racing never disappoints even if the convergence zone at times gives us fits. Our program offers outstanding race management and highly accomplished competitors. **Lake Washington** offers **one-design racing** with the breathtaking backdrop of Mount Rainier and **Puget Sound** offering one-design, **PHRF** and **ORC** classes with the Olympic Mountains as a backdrop, aren't we spoiled?

The **CYC racing program** had a banner year in 2019 and I look forward to being part of the 2020 season. I encourage you to get out on the racecourse as much as possible and also ask that each boat look to invest in the program by **volunteering**. The Office Team, Matt, or I will readily put you in touch with people for ways you can contribute. Or just find us after racing at a BBQ or in the club house.

David Barnes,  
Commodore



This year, CYC celebrates 75 years promoting the sport we all love, sailboat racing. Over those years, the club has produced many champions and hosted countless world class and local regattas on Puget Sound and Lake Washington.

The variety of programs the club produces is amazing. We strive hard to offer every sailor the opportunity to participate in racing events ranging from championships to low-pressure, high-fun events like Friday Sailfest.

This level of event production requires YOUR participation! The very notion of "club" is a group of likeminded individuals working together. The club needs your personal commitment to participate in staging these events. Race committee volunteering, protest committee hearing, helping stage pre and post racing social events, bartending...the list goes on.

My ask is that each of you commit some of your personal resources (time, finances, whatever you can) to CYC this anniversary year. See for yourself what rewards you can find when you help each other pursue our common love for sailing.

Thank you for your ongoing support. It is an honor to serve as your Fleet Race Captain.

Matthew Wood,  
Fleet Captain Race & PHRF-NW Handicapper

## About the Club

Our club was founded in 1945 by sailors who came up with the idea while in a ski hut in the Cascade Mountains. They wanted to race more and socialize more with their sailing friends. Corinthian Yacht Club has become the region's preeminent club for people who love sailing, whether or not they happen to own a boat. Our activities include racing, cruising, youth sailing, education, and social events.

The club is a Washington nonprofit corporation that is owned by the members. While it is not a charity, it is also not a typical company or nonprofit. Instead it is more of a cooperative with shared property where the members remain in charge of managing the organization and fulfilling a currently relevant vision.

Members are individuals and families. Juniors who are 18 and under are members within their family's membership. There are also business and fleet memberships.

The membership as a whole has ultimate say over club matters and meets at least annually to elect representatives, maintain the bylaws, and approve major decisions. The Board of Trustees, composed of elected Officers and Directors, meets at least monthly to oversee club operations and approve policy. The Officers, led by the Commodore as chief executive, execute the ongoing business of the club. Various committees are formed by the Board to carry out given responsibilities and events.

A lean crew of staff report to the Commodore. Our staff handle business operations to facilitate the members who make things happen. The number of staff is low to keep our dues low, and that means we should expect to pitch in extensively.

We have the club to do more of what we, as sailors, want to do together than we could on our own. The love of sailing is our bond and the interaction of our great people is our value. The club is our platform to help us share our excellent sailing lifestyle with more people and do more with each other and for each other.



Clubhouse at Shilshole Bay Marina, Ballard

Photo: Tom Ringold

# Club Programs

## Racing

Corinthian sailors have been racing on Lake Washington at Leschi since our founding in 1945 and on Puget Sound out of Shilshole since before members built our clubhouse in 1969. We have heard that we run more races than any other private club in the country. Corinthian members are passionate about racing.

Evening racing on Lake Washington runs from mid-April through mid-September with J-24s racing on Tuesday and Thistles, San Juan 24s, and Thunderbirds racing on Wednesday. Join us at the end of the summer for the late night Moonlight Poker Run Race. The Lake Fall Regatta follows the evening series for a weekend event out of Leschi. Additional fleets are welcome to form.

Evening racing on Puget Sound runs over the same period with keelboats racing on Wednesday and I-14, 505, Star, Tasar, Vanguard 15, RS Aero, Laser, Snipe, and Optimist classes racing on Thursday. We offer the Center Sound Series mid-distances races in March and run several weekend buoy-racing regattas. Over the summer months, we also support casual racing on Friday nights off the breakwater.

## Cruising

The Pacific Northwest is a world-class place to cruise and many of our members take part on cruises organized by volunteers. There are about a dozen events each year. Members with boats bring them and members without boats ship as crew. Former, current, and perhaps future racers all take part in cruising together.

## Youth Sailing

We've ramped up our youth sailing with the Summer Sail Camp providing education to as many as 140 juniors, intermediate to advanced clinics, Guppy sailing on summer Wednesdays evenings, and family evening sailing on Fridays for young families to enjoy the marine environment.

## Education

Our members love to learn and share. Each year we run dozens of education events including the Rookie Rally (learn how to crew and race), pre-race strategy chalk talks, cruising presentations, first aid, US Sailing courses (race management, judging, safe powerboat handling), markset driver training, women's sailing clinics, and even volunteer bartender training.

## Social

Getting people together on and off the water is probably the most rewarding value of the club. Leschi sailors get together after racing at the BluWater and at club-organized barbeques. Our Shilshole clubhouse is open to members Thursdays and Fridays and after evening and weekend racing (over 100 nights a year). The bar is often run by volunteers and affordable dinners are expertly prepared by our private chef, serving several thousand meals per year. Sometimes we're just open to hang out and other times we have a program, like live music, wine tastings, and sailing presentations by our members. Check the website calendar and join in.

# Racing Calendar

## JANUARY

- 5 Laser Frostbite
- 17 Annual Awards Party
- 25-26 Frigid Digit Regatta

## FEBRUARY

- 23 Laser Frostbite

## MARCH

- 7 Blakely Rock Race
- 15 Laser Frostbite
- 21 Scatchet Head Race
- 28 Three Tree Point Race

## APRIL

- 18-19 PSSR (Small Boat)
- 21-23 Spring Evening 1 (T, W, Th)
- 28-30 Spring Evening 2 (T, W, Th)

## MAY

- 5-7 Spring Evening 3 (T, W, Th)
- 12-14 Spring Evening 4 (T, W, Th)
- 16-17 PSSR (Big Boat)
- 19-21 Spring Evening 5 (T, W, Th)
- 26-28 Interim Evening 1 (T, W, Th)

## JUNE

- 2-4 Interim Evening 2 (T, W, Th)
- 9-11 Interim Evening 3 (T, W, Th)
- 16-18 Interim Evening 4 (T, W, Th)
- 23-25 Interim Evening 5 (T, W, Th)
- 26-28 San Juan 24 North Americans
- 30-2 Summer Evening 1 (T, W, Th)

## JULY

- 7-9 Summer Evening 2 (T, W, Th)
- 13-17 Point Roberts Race Week
- 21-23 Summer Evening 3 (W, Th)
- 28-30 Summer Evening 4 (T, W, Th)

## AUGUST

- 1-6 Summer Evening 5 (T, W, Th)
- 11-13 Fall Evening 1 (T, W, Th)
- 15 Lake Moonlight Poker Run Race
- 15-16 Commodore / Gibson Cruise
- 18-20 Fall Evening 2 (T, W, Th)
- 25-27 Fall Evening 3 (T, W, Th)

## SEPTEMBER

- 1-3 Fall Evening 4 (T, W, Th)
- 8-10 Fall Evening 5 (T, W, Th)
- 12 Lake Fall Regatta

## OCTOBER

- 3-4 PSSC (Small Boat)
- 10-11 PSSC (Big Boat)
- 23-25 SYC Grand Prix (@CYC)

## NOVEMBER

- 14-15 Turkey Bowl Regatta
- 23 Annual Membership Meeting  
*(see website to confirm date)*

## JANUARY 2021

- 23-24 Frigid Digit Regatta



# Race Registration

## Registration

Online race registration is available at [www.cycseattle.org](http://www.cycseattle.org).

## Deadlines

Please register as early as possible to help build your fleet. Registrations must be submitted online or received at the club by close of business (normally 5 PM) on the entry deadline. The deadline is stated in the Notice of Race and is typically two days before the event. Registrations accepted at the discretion of the race committee after the deadline may be assessed a \$20 late fee.

## Season's Pass

Discount packages are available for members only (Adult/Family, Senior, Honorary Life, and Junior), as follows:

**Lake Season's Pass (+ Sound Weekends).** Good for all CYC races on Lake Washington, which includes the Spring, Interim, Summer, and Fall Evening series for either Tuesday or Wednesday night, plus the Lake Fall Regatta, plus all CYC Puget Sound weekend races. This is for you if you sail the weeknights, and you will achieve even more substantial savings when you sail more. Your efforts to sail multiple venues are greatly appreciated by your fellow members!

**Sound Season's Pass (+ Lake Weekends).** Good for all CYC races on Puget Sound, which includes the Spring, Interim, Summer, and Fall Evening series for either Wednesday or Thursday night, plus Puget Sound weekend races, plus the Lake Fall Regatta. This is usually very worthwhile if you sail five or more events, such as the four weeknight series and one weekend, or three weeknight series and two weekends. Add even more sailing for no extra charge!

The Season's Pass is for a given owner and boat or, if you happen to change boats mid-season, for a type of boat that would continue to use the same package. For unique circumstances, contact the Fleet Captain Race.

## Contact

For registration issues, please contact one of the following:

CYC Office

[office@cycseattle.org](mailto:office@cycseattle.org)  
206-789-1919

CYC Fleet Captain Race

Matthew Wood  
[matthewewood@outlook.com](mailto:matthewewood@outlook.com)  
206-501-8971

# Entry Fees and Season's Passes

## Lake Events

|                                            |                               |       |
|--------------------------------------------|-------------------------------|-------|
| Tuesday/Wednesday Evening (1 of 4 series)* | <i>See calendar for dates</i> | \$180 |
| Lake Moonlight Poker Run Race              | <i>Aug 15</i>                 | \$50  |
| Lake Fall Regatta                          | <i>Sept 12</i>                | \$80  |

## Sound Events

|                                            |                                          |       |
|--------------------------------------------|------------------------------------------|-------|
| Frigid Digit Regatta<br>Centerboard        | <i>Jan 23-24, 2021</i>                   | \$60  |
| Center Sound Series                        |                                          | \$180 |
| Blakely Rock Race                          | <i>March 7</i>                           | \$70  |
| Scatchet Head Race                         | <i>March 21</i>                          | \$70  |
| Three Tree Point Race                      | <i>March 28</i>                          | \$70  |
| Puget Sound Spring Regatta (PSSR)          | <i>Small: Apr 18-19 / Big: May 16-17</i> |       |
| Keelboat                                   |                                          | \$180 |
| Centerboard                                |                                          | \$80  |
| Wednesday/Thursday Evening (1 of 4 series) | <i>See calendar for dates</i>            |       |
| Keelboat                                   |                                          | \$180 |
| Centerboard                                |                                          | \$80  |
| Commodore Gibson Cruise Regatta            | <i>Aug 15-16</i>                         |       |
| Puget Sound Sailing Championship (PSSC)    | <i>Small: Oct 3-4 / Big: Oct 10-11</i>   |       |
| Keelboat                                   |                                          | \$180 |
| Centerboard                                |                                          | \$80  |
| Turkey Bowl Regatta                        | <i>Nov 14-15</i>                         |       |
| Centerboard                                |                                          | \$60  |

## Member Discount Packages\*

|                                       |  |       |
|---------------------------------------|--|-------|
| Lake Season's Pass (+ Sound Weekends) |  |       |
| Keelboat                              |  | \$650 |
| Centerboard                           |  | \$280 |
| Sound Season's Pass (+ Lake Weekends) |  |       |
| Keelboat                              |  | \$650 |
| Centerboard                           |  | \$280 |

\* Members Only (Adult/Family, Senior, Honorary Life, and Junior).

# Lake Washington Racing

## Last Season's Regatta Winners

### Lake Tuesday Evening Series (J/24)

Spring      *Tremendous Slouch*, Scott Milne  
Interim     *Tremendous Slouch*, Scott Milne  
Summer     *Baba Louie*, Mark Laura  
Fall         *Self Abuse*, Harry Dursch

### Lake Fall Regatta

J/24      *Hair of the Dog*, Jakob Lichtenberg  
San Juan 24      *Grauer Geist*, Marcus Thor  
Thistle      *Zugzwang*, Graham Vaughan

### Lake Wednesday Evening Series

Spring  
T-Bird              *Predator*, Craig Burnell  
San Juan 24        *Return*, Mark Bradner  
Thistle              *Zugzwang*, Graham Vaughan  
Interim  
T-Bird              *Invader*, Mike Dotson  
San Juan 24        *Grauer Geist*, Ken Johnson  
Thistle              *Ranger*, Pat Schirmer  
Summer  
T-Bird              *Predator*, Craig Burnell  
San Juan 24        *Grauer Geist*, Ken Johnson  
Thistle              *Rainbow*, Wayne Balsiger  
Fall  
T-Bird              *Invader*, Mike Dotson  
San Juan 24        *Return*, Mark Bradner  
Thistle              *Zugzwang*, Graham Vaughan



J/24 racing in the Tuesday Evening Series

## Notice of Race

### Lake Tuesday/Wednesday Evening Series

**Date:** There are four Tuesday series and four Wednesday series, as follows:

|                 | <u>Tuesday Series 2020</u>   | <u>Wednesday Series 2020</u> |
|-----------------|------------------------------|------------------------------|
| Spring Series:  | Apr 21, 28, May 5, 12, 19    | Apr 22, 29, May 6, 13, 20    |
| Interim Series: | May 26, Jun 2, 9, 16, 23     | May 27, Jun 3, 10, 17, 24    |
| Summer Series:  | Jun 30, Jul 7, 21, 28, Aug 4 | Jul 1, 8, 22, 29, Aug 5      |
| Fall Series:    | Aug 11, 18, 25, Sep 1, 8     | Aug 12, 19, 26, Sep 2, 9     |

**Location:** Lake Washington off Leschi.

**Classes:**

|             |                                                                                                                        |
|-------------|------------------------------------------------------------------------------------------------------------------------|
| Tuesdays:   | J/24                                                                                                                   |
| Wednesdays: | Thunderbird, San Juan 24, Thistle and other centerboard and small keelboat classes with at least five boats may apply. |

**Schedule:**

|             |                                  |
|-------------|----------------------------------|
| 1715 – 1745 | Practice starts (when available) |
| 1800        | First warning signal             |

The race committee intends to conclude racing no later than a time that will permit boats to return to Leschi Marina before dark.

**Courses:** Courses will typically be windward / leeward and may include gates, offsets, and gybe marks. A target of at least two and up to four races may be sailed each day with a typical race duration of 20 to 60 minutes.

**Scoring:** A boat's series score will be the total of her race scores, except that a boat's worst score will be excluded if at least four races are completed, two scores will be excluded if at least seven races are completed, and three scores will be excluded if at least ten races are completed. This changes RRS A2.1. One race will constitute a series.

**Time Limit:** 90 minutes for the first boat in class and for other boats 30 minutes after the first boat that sails the course.

**Other Provisions:**

- Notice of Race amended by CYC Notice of Race Addendum.
- Eligibility: CYC Adult/Family, Senior, Honorary Life, and Junior members. Prospective members may race in these series for up to 12 months.

**Awards:** 1<sup>st</sup>, 2<sup>nd</sup>, and 3<sup>rd</sup> in class for each series.

**Registration Fee:**

Included in Season's Pass available to CYC members, or:

Keelboat / Centerboard     \$180 per series

**Registration Deadline:** Monday before the start of each series.

# Notice of Race

## Lake Washington Moonlight Poker Run Race

**Date:** August 15, 2020 (Saturday)

**Location:** Lake Washington, starting and finishing lines off Leschi.

**Classes:** PHRF-NW, IRC/ORC, J/24, Thunderbird, San Juan 24, and other keelboat classes with at least five boats may apply.

### Schedule:

#### Saturday

1730-1745

Competitor's briefing

1900

First warning signal

2100

No warning signal after this time

After racing

Awards at Leschi near committee boat moorage

**Course:** Start at the starting line off Leschi, pass under the east span of the Evergreen Point Floating Bridge (also known as the "520 Bridge") northbound, round a temporary mark approximately .25 NM E of Sand Point to port, pass under the east span of the Evergreen Point Floating Bridge southbound, finish at the finishing line off Leschi. Course distance ~ 10 NM.

**Shortened Course:** The race committee may shorten the course at a finishing line approximately 1000 feet north of the east span of the Evergreen Point Floating Bridge. If the race committee signals this shortened course (displays flag S with two sounds), the finishing line shall be between the staff displaying flag S and a nearby temporary buoy. This changes RRS 32.2. This does not prevent the race committee from shortening the course at another mark.

**Poker Run:** Each boat will receive five playing cards during the race, with one card provided at each of the following locations: the start, passing under the bridge northbound, rounding the mark off Sand Point, passing under the bridge southbound, and finishing. A race whaler or assisting vessel will hand out the cards and may display a flashing white beacon light.

**Time Limit:** 2400

### Other Provisions:

- Notice of Race amended by CYC Notice of Race Addendum.
- A boat racing between sunset and sunrise shall carry navigation lights that meet U. S. Coast Guard or applicable government requirements mounted so that they will not be obscured by the sails nor be located below deck level.
- A boat shall carry U.S. Coast Guard (or applicable government entity) flares meeting day-night requirements not older than the expiration date.
- A boat shall have a VHF radio which may be fixed or handheld.

**Awards:** 1<sup>st</sup>, 2<sup>nd</sup>, and 3<sup>rd</sup> in class and best poker hand.

### Registration Fee:

Included in Season's Pass available to CYC members, or:

Keelboat

\$50

**Registration Deadline:** August 13, 2020 (Thursday)

# Notice of Race

## Lake Fall Regatta

**Date:** September 12, 2020 (Saturday)

**Location:** Lake Washington off Leschi.

**Classes:** J/24, Thunderbird, San Juan 24, Thistle and other centerboard and small keelboat classes with at least five boats may apply.

### Schedule:

#### Saturday

|              |                                   |
|--------------|-----------------------------------|
| 0900 – 0930  | Late check in                     |
| 0930 – 0945  | Competitor's briefing             |
| 1015 – 1045  | Practice starts (when available)  |
| 1100         | First warning signal              |
| 1600         | No warning signal after this time |
| After racing | Social gathering at regatta site  |

**Courses:** Courses will typically be windward / leeward and may include gates, offsets, and gybe marks. A target of at least four and up to six races may be sailed each day with typical race duration of 20 to 60 minutes.

**Scoring:** A boat's series score will be the total of her race scores, except that a boat's worst score will be excluded if six or more races are completed. This changes RRS A2.1. One race will constitute a series.

**Time Limit:** 90 minutes for the first boat in class and for other boats 30 minutes after the first boat that sails the course.

### Other Provisions:

- Notice of Race amended by CYC Notice of Race Addendum.

**Awards:** 1<sup>st</sup>, 2<sup>nd</sup>, and 3<sup>rd</sup> in class.

### Registration Fee:

Included in Season's Pass available to CYC members, or:

Keelboat / Centerboard      \$80

**Registration Deadline:** September 10, 2020 (Thursday)



Club hosted barbeques after each series

# Puget Sound Racing

## Last Season's Regatta Winners

### Frigid Digt Regatta

|              |                     |
|--------------|---------------------|
| Tasar        | 2916, Jay Renehan   |
| RS Aero      | Loop, Dalton Bergan |
| Laser        | TCB, David Brink    |
| Laser Radial | TBD, Erik Anderson  |

### Center Sound Series

|         |                                |
|---------|--------------------------------|
| PHRF 1  | Selechie, Kwadwo Copeland      |
| PHRF 2  | Rush, Phillip Dean             |
| PHRF 3  | Kiwi Express, Reinhard Frywald |
| PHRF 4  | More Jubilee, Erik Kristen     |
| PHRF 5  | Dos, Brad Butler               |
| PHRF 6  | Tahlequah, Don Leighton        |
| PHRF 7  | Sachem, Bill Buchan            |
| PHRF 8  | Absolutely, Charlie Macaulay   |
| PHRF 9  | Freda Mae, Vincent Depillis    |
| IRC/ORC | Glory, John Buchan             |

### Puget Sound Spring Regatta (PSSR)

|             |                                  |
|-------------|----------------------------------|
| Hobie 16    | Time Warp, Peter Nelson          |
| J/24        | Tremendous Slouch, Scott Milne   |
| Star        | Green Machine, Carl Buchan       |
| Tasar       | 2380, Luis Madrid                |
| RS Aero     | Meadow Point Hurricane, Dan Falk |
| PHRF 1      | Absolutely, Charlie Macaulay     |
| PHRF 2      | Dos, Brad Butler                 |
| J/105       | More Jubilee, Erik Kristen       |
| J/80        | Rush, Phillip Dean               |
| PHRF 5      | Elixir, Megan Kogut              |
| San Juan 24 | Grauer Geist, Kenneth Johnson    |

### Sound Wednesday Evening Series

|          |                            |
|----------|----------------------------|
| Spring   |                            |
| PHRF 1/2 | Shada, Jerry Woodfield     |
| J/105    | More Jubilee, Erik Kristen |
| PHRF 5   | Sir Hiss, Brian Knapik     |
| J/80     | Crazy Ivan, Bryan Rhodes   |
| Interim  |                            |
| PHRF 1/2 | Pickled Beets, John Rahn   |
| J/105    | Here & Now, Buckey Rezabek |
| PHRF 5   | Sir Hiss, Brian Knapik     |
| J/80     | Taj Mahal, David Schutte   |
| Summer   |                            |
| PHRF 1/2 | Elusive, Jeff Whitney      |
| J/105    | Here & Now, Buckey Rezabek |
| PHRF 5   | Sir Hiss, Brian Knapik     |
| J/80     | Taj Mahal, David Schutte   |
| Fall     |                            |
| PHRF 1/2 | Pickled Beets, John Rahn   |
| J/105    | Here & Now, Buckey Rezabek |
| J/80     | Crazy Ivan, Bryan Rhodes   |

### Moore 24 National Championship

Bruzer, Erik Hauge / Mark Harang

### Star District 6 Championship

Akimbo, Brian Ledbetter / Erik Bentzen

### Sound Thursday Evening Series

|         |                              |
|---------|------------------------------|
| Spring  |                              |
| Star    | Green Machine, Carl Buchan   |
| Tasar   | Sharp as a Tack, Jay Renehan |
| RS Aero | Loop, Dalton Bergan          |
| Laser   | 170802, Charles Fulmer       |
| Interim |                              |
| Star    | Misty, Derek DeCouteau       |
| Tasar   | 2691, Chris Lanzinger        |
| RS Aero | Loop, Dalton Bergan          |
| Laser   | Got Yer Back, Mark Ross      |
| Snipe   | Wasabi, Clifford Wright      |
| Summer  |                              |
| Star    | 7462                         |
| Tasar   | 2691, Chris Lanzinger        |
| RS Aero | Corvair, Jim Barrett         |
| Laser   | 170802, Charles Fulmer       |
| Snipe   | Birthday Girl, Katia Smith   |
| Fall    |                              |
| Star    | Green Machine, Carl Buchan   |
| Tasar   | 2687                         |
| RS Aero | SNR, Todd Willisie           |
| Laser   | 170802, Charles Fulmer       |
| Snipe   | Wasabi, Clifford Wright      |

### Commodore Gibson Cruise

|                |                              |
|----------------|------------------------------|
| Commodore Race | Charlotte, Al & Jane Johnson |
| Gibson Race    | Charlotte, Al & Jane Johnson |

### Puget Sound Sailing Championship (PSSC)

|             |                                 |
|-------------|---------------------------------|
| J/24        | Self Abuse, Pete Sauer          |
| Tasar       | Sharp as a Tack, Jay Renehan    |
| RS Aero     | Zahir, Mike Johnson             |
| IRC/ORC     | Glory, John Buchan              |
| PHRF 2      | Shrek, John Hoag                |
| PHRF 3      | Lodos, Tolga Cezik              |
| PHRF 4      | Vitesse, David Steffen          |
| J/105       | Insubordination, Buckey Rezabek |
| Melges 24   | Square One, Matt Pistay         |
| PHRF 7      | Madame Pele, Tom Andrewes       |
| J/80        | Crazy Ivan, Bryan Rhodes        |
| San Juan 24 | Grauer Geist, Ken Johnson       |

### Turkey Bowl

|              |                              |
|--------------|------------------------------|
| 505          | 8864, Miles Johannessen      |
| Tasar        | Sharp as a Tack, Jay Renehan |
| RS Aero      | Loop, Dalton Bergan          |
| Laser        | 208391, Ian Elliott          |
| Laser Radial | 208049, Hanne Weaver         |
| Laser 4.7    | ZZZZAP, Alex Zaputil         |
| FJ           | 20, Leo Powers               |
| Optimist     | 13616, Dieter Creitz         |

# Notice of Race

## Frigid Digit Regatta

*Presented by the Seattle Laser and RS Aero Fleets*

**Date:** January 23-24, 2021 (Saturday and Sunday)

**Location:** Puget Sound off Shilshole.

**Classes:** RS Aero, Laser, Laser Radial, Laser 4.7, Optimist and other centerboard classes with at least five boats may apply.

### **Schedule:**

#### Saturday

|              |                                                     |
|--------------|-----------------------------------------------------|
| 1030 – 1045  | Competitor's briefing                               |
| 1115 – 1145  | Practice starts (when available)                    |
| 1200         | First warning signal                                |
| After racing | Party at clubhouse with food available for purchase |

#### Sunday

|              |                                   |
|--------------|-----------------------------------|
| 1015 – 1045  | Practice starts (when available)  |
| 1100         | First warning signal              |
| 1600         | No warning signal after this time |
| After racing | Awards party at clubhouse         |

**Courses:** Courses will typically be windward / leeward and may include gates, offsets, and gybe marks. A target of at least four and up to six races may be sailed each day with a typical race duration of 20 to 40 minutes

**Scoring:** A boat's series score will be the total of her race scores, except that a boat's worst score will be excluded if six or more races are completed. This changes RRS A2.1. One race will constitute a series.

**Time Limit:** 60 minutes for the first boat in class and for other boats 20 minutes after the first boat that sails the course.

### **Other Provisions:**

- Notice of Race amended by CYC Notice of Race Addendum.
- Competitors must check in at CYC clubhouse prior to racing.
- The Seattle Laser Fleet Frigid Digit Regatta Perpetual Trophy will be awarded to the winner of the Laser (full rig) fleet.

**Awards:** 1<sup>st</sup>, 2<sup>nd</sup>, and 3<sup>rd</sup> in class.

### **Registration Fee:**

Included in Season's Pass available to CYC members, or:

Centerboard                      \$60

**Registration Deadline:** January 21, 2021 (Thursday)



## Notice of Race Center Sound Series

The Center Sound Series is a series of the following events:

|                       |                           |
|-----------------------|---------------------------|
| Blakely Rock Race     | March 7, 2020 (Saturday)  |
| Scatchet Head Race    | March 21, 2020 (Saturday) |
| Three Tree Point Race | March 28, 2020 (Saturday) |

**Classes:** PHRF-NW, IRC/ORC and other classes with at least five boats may apply. Monohull, multihull, and casual class boats will race in separate classes.

**Scoring:** Boats will be scored in class and overall. A boat's series score will be the total of her race scores with no scores excluded. This changes RRS A2.1. One race will constitute a series.

### Other Provisions:

- Notice of Race amended by CYC Notice of Race Addendum.

### Awards:

Each Race: 1<sup>st</sup>, 2<sup>nd</sup>, and 3<sup>rd</sup> in class.

Series: 1<sup>st</sup> overall per course and 1<sup>st</sup>, 2<sup>nd</sup>, 3<sup>rd</sup> in class.

Permanent Trophies: Permanent trophies will be awarded at the CYC Annual Party for race classes overall by race and racing classes series overall (Werner Ohmes Fog Horn Trophy). The Werner Ohmes Fog Horn Trophy is awarded to the boat with the highest score calculated as follows: A boat's score for a race is  $100(N + 1 - P)/(N + 1)$  points, where P is her place in her class in that race and N is the number of starters in her class in that race; a boat that does not finish scores  $(66)/(N + 1)$  points, a disqualified boat scores  $(33)/(N + 1)$  points, and a boat that does not start scores 0 points; a boat's series score is the sum of her score in all races in the series.

### Registration Fee:

Included in Season's Pass available to CYC members, or:

\$180 for Center Sound Series (or \$70 per race). Casual Class \$100 for Center Sound Series (or \$40 per race). Boats that register per race will be scored in the series for the races entered.

**Registration Deadline:** March 5, 2020 (Thursday)

**Moorage:** Guest moorage is available at Shilshole Bay Marina. To make arrangements, call the marina office at VHF 17, 206-787-3006, or 206-601-4089 (after hours). Moorage fees are based on boat length and services.

For more information, see the Notices of Race for each race in the series.

# Notice of Race

## Center Sound Series: Blakely Rock Race

**Date:** March 7, 2020 (Saturday)

**Location:** Puget Sound, starting and finishing lines in Shilshole Bay.

**Classes:** PHRF-NW, IRC/ORC and other classes with at least five boats may apply. Monohull, multihull, and casual class boats will race in separate classes.

### **Schedule:**

#### Saturday

|              |                                   |
|--------------|-----------------------------------|
| 1000         | First warning signal              |
| 1400         | No warning signal after this time |
| After racing | Party at clubhouse                |

### **Course (Racing Classes):**

**North Wind:** Start by leaving the starting mark buoy to port, round mark "N" to port, round mark "K" to port, and finish by leaving the finishing mark buoy to port. Course distance ~ 21 NM.

**South Wind:** Start by leaving the starting mark buoy to starboard, round mark "K" to starboard, round mark "N" to starboard, and finish by leaving the finishing mark buoy to starboard. Course distance ~ 21 NM.

### **Course (Casual Classes):**

**North Wind:** Start by leaving the starting mark buoy to port, round mark "N" to port, round mark "W" to port, and finish by leaving the finishing mark buoy to port. Course distance ~ 12 NM.

**South Wind:** Start by leaving the starting mark buoy to starboard, round mark "W" to starboard, round mark "N" to starboard, and finish by leaving the finishing mark buoy to starboard. Course distance ~ 12 NM.

**Time Limit:** 8 hours for the first boat in class and for other boats the later of 8 hours or 1 hour after of the first boat that sails the course.

### **Other Provisions:**

- Notice of Race amended by CYC Notice of Race Addendum.
- Boats must comply with equipment requirement category USSER Nearshore, as amended.
- This race is part of the CYC Center Sound Series.

**Awards:** For the race, 1<sup>st</sup>, 2<sup>nd</sup>, and 3<sup>rd</sup> in class. Party and awards at the CYC clubhouse after racing. For the Center Sound Series, see awards for the Three Tree Point Race.

### **Registration Fee:**

Included in Season's Pass available to CYC members, or:

\$70 (or \$180 for Center Sound Series). Casual Class \$40 (or \$100 for Center Sound Series).

**Registration Deadline:** March 5, 2020 (Thursday)

# Notice of Race

## Center Sound Series: Scatchet Head Race

**Date:** March 21, 2020 (Saturday)

**Location:** Puget Sound, starting and finishing lines in Shilshole Bay.

**Classes:** PHRF-NW, IRC/ORC and other classes with at least five boats may apply. Monohull, multihull, and casual class boats will race in separate classes.

**Schedule:**

Saturday

|              |                                   |
|--------------|-----------------------------------|
| 1000         | First warning signal              |
| 1400         | No warning signal after this time |
| After racing | Party at clubhouse                |

**Course (Racing Classes):**

Start by leaving the starting mark buoy to port, round Scatchet Head Lighted Gong Buoy (LL#16555) to port, and finish by leaving the finishing mark buoy to port. Course distance ~ 26 NM.

**Course (Casual Classes):**

Start by leaving the starting mark buoy to port, round mark "U" to port, round mark "M" to starboard, round mark "U" to port, and finish by leaving the finishing mark buoy to port. Course distance ~ 13 NM.

**Time Limit:** 9 hours for the first boat in class and for other boats the later of 9 hours or 1 hour after of the first boat that sails the course.

**Other Provisions:**

- Notice of Race amended by CYC Notice of Race Addendum.
- Boats must comply with equipment requirement category USSER Nearshore, as amended.
- This race is part of the CYC Center Sound Series.

**Awards:** For the race, 1<sup>st</sup>, 2<sup>nd</sup>, and 3<sup>rd</sup> in class. Party and awards at the CYC clubhouse after racing. For the Center Sound Series, see awards for the Three Tree Point Race.

**Registration Fee:**

Included in Season's Pass available to CYC members, or:

\$70 (or \$180 for Center Sound Series). Casual Class \$40 (or \$100 for Center Sound Series).

**Registration Deadline:** March 19, 2020 (Thursday)

# Notice of Race

## Center Sound Series: Three Tree Point Race

**Date:** March 28, 2020 (Saturday)

**Location:** Puget Sound, starting and finishing lines in Shilshole Bay.

**Classes:** PHRF-NW, IRC/ORC and other classes with at least five boats may apply. Monohull, multihull, and casual class boats will race in separate classes.

### **Schedule:**

#### Saturday

|              |                                   |
|--------------|-----------------------------------|
| 1000         | First warning signal              |
| 1400         | No warning signal after this time |
| After racing | Party at clubhouse                |

### **Course (Racing Classes):**

Start by leaving the starting mark buoy to port, round the TTPYC Racing Buoy C to starboard, and finish by leaving the finishing mark buoy to port. The TTPYC Racing Buoy C is a white, 6 inch diameter cylinder rising 8 feet above the water located approximately 1000 feet SE of the Three Tree Point Light. Course distance ~ 30 NM.

### **Course (Casual Classes):**

Start by leaving the starting mark buoy to port, round mark "D" to port, and finish by leaving the finishing mark buoy to port. Course distance ~ 12 NM.

**Time Limit:** 9 hours for the first boat in class and for other boats the later of 9 hours or 1 hour after of the first boat that sails the course.

### **Other Provisions:**

- Notice of Race amended by CYC Notice of Race Addendum,
- Boats must comply with equipment requirement category USSER Nearshore, as amended.
- This race is part of the CYC Center Sound Series.

**Awards:** For the race, 1<sup>st</sup>, 2<sup>nd</sup>, and 3<sup>rd</sup> in class. Party and awards at the CYC clubhouse after racing. Awards for the Center Sound Series will be presented after this race.

### **Registration Fee:**

Included in Season's Pass available to CYC members, or:

\$70 (or \$180 for Center Sound Series). Casual Class \$40 (or \$100 for Center Sound Series).

**Registration Deadline:** March 26, 2020 (Thursday)

# Notice of Race

## Puget Sound Spring Regatta (Small Boat)

**Date:** April 18-19, 2020 (Saturday and Sunday)

**Location:** Puget Sound off Shilshole.

**Classes:** F18, I-14, 505, J/24, Star, Thistle, Tasar, Vanguard 15, RS Aero, Laser, Snipe, Optimist and other centerboard and small keelboat classes with at least five boats may apply.

### **Schedule:**

#### Saturday

|              |                                  |
|--------------|----------------------------------|
| 0900 – 0930  | Late check in                    |
| 0930 – 0945  | Competitor's briefing            |
| 1015 – 1045  | Practice starts (when available) |
| 1100         | First warning signal             |
| After racing | Party at clubhouse               |

#### Sunday

|              |                                   |
|--------------|-----------------------------------|
| 1015 – 1045  | Practice starts (when available)  |
| 1100         | First warning signal              |
| 1600         | No warning signal after this time |
| After racing | Awards party at clubhouse         |

**Courses:** Courses will typically be windward / leeward and may include gates, offsets, and gybe marks. A target of at least four and up to six races may be sailed each day with a typical race duration of 20 to 60 minutes.

**Scoring:** A boat's series score will be the total of her race scores, except that a boat's worst score will be excluded if six or more races are completed. This changes RRS A2.1. One race will constitute a series.

**Time Limit:** 90 minutes for the first boat in class and for other boats 30 minutes after the first boat that sails the course.

### **Other Provisions:**

- Notice of Race amended by CYC Notice of Race Addendum.

**Awards:** 1<sup>st</sup>, 2<sup>nd</sup>, and 3<sup>rd</sup> in class.

### **Registration Fee:**

Included in Season's Pass available to CYC members, or:

|             |       |
|-------------|-------|
| Keelboat    | \$180 |
| Centerboard | \$80  |

**Registration Deadline:** April 16, 2020 (Thursday)

**Guest Moorage and Dry Storage:** The Shilshole Marina north parking lot adjacent to the dry storage area will be available for guest dry storage. A limited amount of included guest moorage will be available between piers W and X.

# Notice of Race

## Puget Sound Spring Regatta (Big Boat)

**Date:** May 16-17, 2020 (Saturday and Sunday)

**Location:** Puget Sound off Shilshole.

**Classes:** PHRF-NW, IRC/ORC, Farr 30, J/105, Melges 24, J/80, Thunderbird, San Juan 24 and other keelboat classes with at least five boats may apply.

### **Schedule:**

#### Saturday

|              |                                  |
|--------------|----------------------------------|
| 0900 – 0930  | Late check in                    |
| 0930 – 0945  | Competitor's briefing            |
| 1015 – 1045  | Practice starts (when available) |
| 1100         | First warning signal             |
| After racing | Party at clubhouse               |

#### Sunday

|              |                                   |
|--------------|-----------------------------------|
| 1015 – 1045  | Practice starts (when available)  |
| 1100         | First warning signal              |
| 1600         | No warning signal after this time |
| After racing | Awards party at clubhouse         |

**Courses:** Courses will typically be windward / leeward and may include gates, offsets, and gybe marks. A target of at least four and up to six races may be sailed each day with a typical race duration of 20 to 60 minutes.

**Scoring:** A boat's series score will be the total of her race scores, except that a boat's worst score will be excluded if six or more races are completed. This changes RRS A2.1. One race will constitute a series.

**Time Limit:** 90 minutes for the first boat in class and for other boats 30 minutes after the first boat that sails the course.

### **Other Provisions:**

- Notice of Race amended by CYC Notice of Race Addendum.
- Keelboats racing in handicap classes must comply with equipment requirement category USSER Nearshore, as amended. These requirements do not apply to boats racing in one design classes.

**Awards:** 1<sup>st</sup>, 2<sup>nd</sup>, and 3<sup>rd</sup> in class.

### **Registration Fee:**

Included in Season's Pass available to CYC members, or:

|              |       |
|--------------|-------|
| Keelboat     | \$180 |
| Casual Class | \$100 |

**Registration Deadline:** May 14, 2020 (Thursday)

**Guest Moorage and Dry Storage:** The Shilshole Marina north parking lot adjacent to the dry storage area will be available for guest dry storage. A limited amount of included guest moorage will be available between piers W and X.

## Notice of Race

### Sound Wednesday/Thursday Evening Series

**Date:** There are four Wednesday series and four Thursday series, as follows:

|                 | <u>Wednesday Series 2020</u> | <u>Thursday Series 2020</u> |
|-----------------|------------------------------|-----------------------------|
| Spring Series:  | Apr 22, 29, May 6, 13, 20    | Apr 23, 30, May 7, 14, 21   |
| Interim Series: | May 27, Jun 3, 10, 17, 24    | May 28, Jun 4, 11, 18, 25   |
| Summer Series:  | Jul 1, 8, 22, 29, Aug 5      | Jul 2, 9, 23, 30, Aug 6     |
| Fall Series:    | Aug 12, 19, 26, Sep 2, 9     | Aug 13, 20, 27, Sep 3, 10   |

**Location:** Puget Sound off Shilshole.

#### **Classes:**

|             |                                                                                                                                                |
|-------------|------------------------------------------------------------------------------------------------------------------------------------------------|
| Wednesdays: | PHRF-NW, IRC/ORC, Farr 30, J/105, Melges 24, J/80, Star and other keelboat classes with at least five boats may apply.                         |
| Thursdays:  | F18, I-14, 505, Thistle, Tasar, Vanguard 15, RS Aero, Laser, Snipe, Optimist and other centerboard classes with at least five boats may apply. |

#### **Schedule:**

|              |                                   |
|--------------|-----------------------------------|
| 1730 – 1800  | Practice starts (when available)  |
| 1815         | First warning signal              |
| Sunset       | No warning signal after this time |
| After racing | Dinner at clubhouse               |

**Courses:** Courses will typically be windward / leeward and may include gates, offsets, and gybe marks. A target of at least two and up to four races may be sailed each day with a typical race duration of 20 to 60 minutes.

**Scoring:** A boat's series score will be the total of her race scores, except that a boat's worst score will be excluded if six or more races are completed. This changes RRS A2.1. One race will constitute a series.

**Time Limit:** 90 minutes for the first boat in class and for other boats 30 minutes after the first boat that sails the course.

#### **Other Provisions:**

- Notice of Race amended by CYC Notice of Race Addendum.
- Eligibility: CYC Adult/Family, Senior, Honorary Life, and Junior members. Prospective members may race in these series for up to 12 months.

**Awards:** 1<sup>st</sup>, 2<sup>nd</sup>, and 3<sup>rd</sup> in class for each series.

#### **Registration Fee:**

Included in Season's Pass available to CYC members, or:

|              |       |
|--------------|-------|
| Keelboat     | \$180 |
| Centerboard  | \$80  |
| Casual Class | \$100 |

**Registration Deadline:** Monday before the start of each series.

## Race Information

### CYC Commodore Gibson Cruise



## COMMODORE GIBSON RACE/CRUISE

This event is a weekend cruise with the Commodore Race from Shilshole to Port Ludlow on Saturday, potluck dinner Saturday night, and the Gibson Race from Port Ludlow back to Shilshole on Sunday. Handicaps are applied by adjusting the start times for each boat. See website for more information.

**Date:** August 15-16, 2020 (Saturday and Sunday)

**Location:** Puget Sound from Shilshole to Port Ludlow.

**Schedule:** First warning at 1000 on Saturday and 1100 on Sunday.

**Courses:**

Commodore Race (Saturday): Start at Meadow Point Buoy (LL #16765) and finish at Foulweather Bluff Buoy (LL #16535). Course distance ~ 17.5 NM.

Gibson Race (Sunday): Start at Foulweather Bluff Buoy and finish at Meadow Point Buoy. Course distance ~ 17.5 NM.

The start location may be advanced along the course to facilitate finishing.

**Time Limit:** 1700 on Saturday and 1900 on Sunday.

**Moorage:** Get reservations with CYC group at Port Ludlow Marina, 360-437-0513.

**Contact:** Al Johnson, [ajohnson1101@gmail.com](mailto:ajohnson1101@gmail.com)



# Notice of Race

## Puget Sound Sailing Championship (Small Boat)

**Date:** October 3-4, 2020 (Saturday and Sunday)

**Location:** Puget Sound off Shilshole.

**Classes:** F18, I-14, 505, J/24, Star, Thistle, Tasar, Vanguard 15, RS Aero, Laser, Snipe, Optimist and other centerboard and small keelboat classes with at least five boats may apply.

### **Schedule:**

#### Saturday

|              |                                  |
|--------------|----------------------------------|
| 0900 – 0930  | Late check in                    |
| 0930 – 0945  | Competitor's briefing            |
| 1015 – 1045  | Practice starts (when available) |
| 1100         | First warning signal             |
| After racing | Party at clubhouse               |

#### Sunday

|              |                                   |
|--------------|-----------------------------------|
| 1015 – 1045  | Practice starts (when available)  |
| 1100         | First warning signal              |
| 1600         | No warning signal after this time |
| After racing | Awards party at clubhouse         |

**Courses:** Courses will typically be windward / leeward and may include gates, offsets, and gybe marks. A target of at least four and up to six races may be sailed each day with a typical race duration of 20 to 60 minutes.

**Scoring:** A boat's series score will be the total of her race scores with no scores excluded. This changes RRS A2.1. One race will constitute a series.

**Time Limit:** 90 minutes for the first boat in class and for other boats 30 minutes after the first boat that sails the course.

### **Other Provisions:**

- Notice of Race amended by CYC Notice of Race Addendum.

**Awards:** 1<sup>st</sup>, 2<sup>nd</sup>, and 3<sup>rd</sup> in class.

### **Registration Fee:**

Included in Season's Pass available to CYC members, or:

|             |       |
|-------------|-------|
| Keelboat    | \$180 |
| Centerboard | \$80  |

**Registration Deadline:** October 1, 2020 (Thursday)

# Notice of Race

## Puget Sound Sailing Championship (Big Boat)

**Date:** October 10-11, 2020 (Saturday and Sunday)

**Location:** Puget Sound off Shilshole.

**Classes:** PHRF-NW, IRC/ORC, Farr 30, J/105, Melges 24, J/80, Thunderbird, San Juan 24 and other keelboat classes with at least five boats may apply.

### **Schedule:**

#### Saturday

|              |                                  |
|--------------|----------------------------------|
| 0900 – 0930  | Late check in                    |
| 0930 – 0945  | Competitor's briefing            |
| 1015 – 1045  | Practice starts (when available) |
| 1100         | First warning signal             |
| After racing | Party at clubhouse               |

#### Sunday

|              |                                   |
|--------------|-----------------------------------|
| 1015 – 1045  | Practice starts (when available)  |
| 1100         | First warning signal              |
| 1600         | No warning signal after this time |
| After racing | Awards party at clubhouse         |

**Courses:** Courses will typically be windward / leeward and may include gates, offsets, and gybe marks. A target of at least four and up to six races may be sailed each day with a typical race duration of 20 to 60 minutes.

**Scoring:** A boat's series score will be the total of her race scores with no scores excluded. This changes RRS A2.1. One race will constitute a series.

**Time Limit:** 90 minutes for the first boat in class and for other boats 30 minutes after the first boat that sails the course.

### **Other Provisions:**

- Notice of Race amended by CYC Notice of Race Addendum.
- Keelboats racing in handicap classes must comply with equipment requirement category USSER Nearshore, as amended. These requirements do not apply to boats racing in one design classes.

**Awards:** 1<sup>st</sup>, 2<sup>nd</sup>, and 3<sup>rd</sup> in class.

### **Registration Fee:**

Included in Season's Pass available to CYC members, or:

|              |       |
|--------------|-------|
| Keelboat     | \$180 |
| Casual Class | \$100 |

**Registration Deadline:** October 8, 2020 (Thursday)

# Notice of Race

## Turkey Bowl Regatta

**Date:** November 14-15, 2020 (Saturday and Sunday)

**Location:** Puget Sound off Shilshole.

**Classes:** F18, I-14, 505, Star, Thistle, Tasar, Vanguard 15, RS Aero, Laser, Snipe, Optimist and other centerboard and small keelboat classes with at least five boats may apply.

### **Schedule:**

#### Saturday

|              |                                  |
|--------------|----------------------------------|
| 0900 – 0930  | Late check in                    |
| 0930 – 0945  | Competitor's briefing            |
| 1015 – 1045  | Practice starts (when available) |
| 1100         | First warning signal             |
| After racing | Party at clubhouse               |

#### Sunday

|              |                                   |
|--------------|-----------------------------------|
| 1015 – 1045  | Practice starts (when available)  |
| 1100         | First warning signal              |
| 1600         | No warning signal after this time |
| After racing | Awards party at clubhouse         |

**Courses:** Courses will typically be windward / leeward and may include gates, offsets, and gybe marks. A target of at least four and up to six races may be sailed each day with a typical race duration of 20 to 40 minutes

**Scoring:** A boat's series score will be the total of her race scores, except that a boat's worst score will be excluded if six or more races are completed. This changes RRS A2.1. One race will constitute a series.

**Time Limit:** 60 minutes for the first boat in class and for other boats 20 minutes after the first boat that sails the course.

### **Other Provisions:**

- Notice of Race amended by CYC Notice of Race Addendum.

**Awards:** 1<sup>st</sup>, 2<sup>nd</sup>, and 3<sup>rd</sup> in class.

### **Registration Fee:**

Included in Season's Pass available to CYC members, or:

Centerboard                      \$60

**Registration Deadline:** November 12, 2020 (Thursday)

## CYC Notice of Race Addendum

The CYC Notice of Race Addendum is common language that a particular Notice of Race may specifically incorporate.

The organizing authority is the Corinthian Yacht Club of Seattle (CYC).

### 1 Rules

- 1.1 This regatta will be governed by the rules as defined in the Racing Rules of Sailing (RRS).
- 1.2 US Sailing prescriptions to the following rules apply: RRS 34, 40, 48.1, 60.3, 61.4, 63.2, 63.4, 64.3(b), 67, 70.5(a), 76.1, 82, 86.3, 88.2, Appendix G and R. Inclusion of additional prescriptions may be noted elsewhere in the Notice of Race or Sailing Instructions. US Sailing prescriptions are available at [www.ussailing.org](http://www.ussailing.org).
- 1.3 Changes to the rules may be noted elsewhere in the Notice of Race or Sailing Instructions. If the Notice of Race and Sailing Instructions are in conflict, the Sailing Instructions have precedence.
- 1.4 Prior to the publication of the Sailing Instructions, changes to the Notice of Race will be available on the CYC website at [www.cycseattle.org](http://www.cycseattle.org). After the publication of the Sailing Instructions, changes to the Notice of Race will be available on the official notice board described in the Sailing Instructions.

### 2 Eligibility and Entry

- 2.1 Entrants must register online at [www.cycseattle.org](http://www.cycseattle.org), or by form delivered to CYC, and pay appropriate fees by the registration deadline. Registrations accepted at the discretion of the organizing authority or race committee after the deadline may be assessed a \$20 late fee.
- 2.2 Boats must be insured with valid third-party liability insurance with coverage of at least \$300,000 per incident.
- 2.3 A boat wishing to use sails with identification different from her own must receive permission from the organizing authority by the registration deadline or when her late registration is accepted. This changes RRS 77.
- 2.4 A boat racing in a handicap class must ensure that her correct handicap class rating is issued and recorded by the class organization by the registration deadline or when her late registration is accepted. Boats participating without a valid class certificate will not be entered or scored and her entry fee may not be refunded. A change in a boat's handicap class rating will take effect on the day it is recorded by the class organization. Changes are not retroactive. When a boat's handicap class rating changes between races that are part of a series, the boat remains in the same class in which she started the series.
- 2.5 A boat rated by her handicap class in consideration of water ballast may use water ballast as rated. This changes RRS 51.
- 2.6 Competitors give absolute right and permission for images and video of themselves and their boat to be published for commercial purposes by the

event organizing authority and sponsors and their licensees and may be required to sign a release to complete the boat registration.

- 2.7 Competitors may be required to complete release of liability, depiction release, medical consent, and medical and emergency information forms and agreements to complete the boat registration.

### 3 Operating and Equipment Requirements

- 3.1 Sailing is an activity that has an inherent risk of damage and injury.

Competitors in this event are participating entirely at their own risk. See RRS 4, Decision to Race. The responsibility for a boat's decision to participate in a race or to continue racing is hers alone. The race organizers (organizing authority, race committee, technical committee, protest committee, host club, sponsors, or any other organization or official) will not be responsible for damage to any boat or other property or the injury to any competitor, including death, sustained as a result of participation in this event. By participating in this event, each competitor agrees to release the race organizers from any and all liability associated with such competitor's participation in this event to the fullest extent permitted by law.

- 3.2 For centerboard boats, competitors must wear personal floatation devices, as in RRS 40, and, for regattas November through March, must also wear a wetsuit or drysuit. These requirements apply while afloat except briefly while changing or adjusting clothing or personal equipment.

- 3.3 Boats designated in the applicable Notice of Race must comply with the equipment requirements of *US Sailing US Safety Equipment Requirements* (USSER), according to the category requirement identified, if any, in the Notice of Race. The text of these regulations is available from the US Sailing website at [www.ussailing.org](http://www.ussailing.org). The following changes apply to USSER Nearshore:

- (a) USSER 2.4 required, except for boats under 9 meters or boats under 12 meters with crew position inboard except briefly to perform a necessary task. For boats that do not meet USSER 2.4, competitors must wear personal floatation devices, as in RRS 40, while afloat except briefly while changing or adjusting clothing or personal equipment.
- (b) USSER 2.4.4 amended to add "Wire recommended for durability; however, if the person in charge believes it to be safer for the crew, lifelines may be high molecular weight polyethylene (HMPE) line with spliced terminations or terminals specifically intended for the purpose. When HMPE is used, the load-bearing portion (core) shall meet or exceed minimum diameter requirements."
- (c) USSER 2.7.2 required.
- (d) USSER 3.7.2 required, "a man overboard pole and flag, with a lifebuoy" changed to "a lifebuoy", light required from sunset to sunrise.
- (e) USSER 3.22 required.
- (f) USSER 3.26 required.

- 3.4 Keelboats must comply with federal safety regulations concerning life jackets (33 CFR 175 Subpart B), visual distress signals (33 CFR 175 Subpart C), fire extinguishers (46 CFR 25.30), sound producing devices (33 CFR 83 Subpart D), and navigation lights (33 CFR 83 Subpart C). These are identified in US Coast

Guard publication *A Boater's Guide to the Federal Requirements for Recreational Boats*, available at [publications.usa.gov](http://publications.usa.gov) or [www.uscgboating.org](http://www.uscgboating.org).

- 3.5 The race committee or technical committee may inspect a boat at any time before or after racing for compliance with requirements.
  - 3.6 Penalties under CYC Notice of Race Addendum 3 may be less than disqualification. This changes RRS 64.1.
- #### 4 Scoring
- 4.1 The time limit is the maximum allowable time from a boat's starting signal to her finishing time or a time of day. A boat that does not finish within the time limit will be scored Did Not Finish (DNF). This changes RRS 35.
  - 4.2 A boat that did not start (OCS), did not finish (DNF), retired (RET), or is disqualified (DSQ, DNE, DGM, UFD, BFD) will be scored for the finishing place one more and a boat that did not start (DNC, DNS) will be scored for the finishing place two more than the number boats starting and finishing and not thereafter retiring or being disqualified. This changes RRS A4.2. RRS A9 is deleted.
  - 4.3 Corrected times for PHRF-NW handicap classes will be calculated using the Time on Distance method.
- #### 5 Sailing Instructions
- 5.1 Sailing Instructions will be available two days before the regatta on the CYC website at [www.cycseattle.org](http://www.cycseattle.org) or, if not available on the website, on the notice board at the CYC clubhouse.

# US Sailing US Safety Equipment Requirements (USSER)

Nearshore Category as Amended by the CYC Notice of Race Addendum

| Section Name                     | #     | Requirement                                                                                                                                                                                                                                                                                                                                                                                                                                                                                                                                                                                  | Nearshore                            |
|----------------------------------|-------|----------------------------------------------------------------------------------------------------------------------------------------------------------------------------------------------------------------------------------------------------------------------------------------------------------------------------------------------------------------------------------------------------------------------------------------------------------------------------------------------------------------------------------------------------------------------------------------------|--------------------------------------|
| Definition                       | 1.0.3 | Nearshore: Races primarily sailed during the day, close to shore, in relatively protected waters.                                                                                                                                                                                                                                                                                                                                                                                                                                                                                            | <b>Required</b>                      |
| Overall: Responsibility          | 1.2   | The safety of a boat and her crew is the sole and inescapable responsibility of the "person in charge", as per RRS 46, who shall ensure that the boat is seaworthy and manned by an experienced crew with sufficient ability and experience to face bad weather. S/he shall be satisfied as to the soundness of hull, spars, rigging, sails and all gear. S/he shall ensure that all safety equipment is at all times properly maintained and safely stowed and that the crew knows where it is kept and how it is to be used.                                                               | <b>Required</b>                      |
| Overall: Responsibility          | 1.2.1 | Should there be an incident during a race the Organizing Authority or US Sailing may conduct an investigation to determine the facts of the incident and provide recommendations. By participating in a race conducted under the SER, the person in charge, each competitor and boat owner agrees to reasonably cooperate with the organizing authority and US Sailing in the development of an independent incident report.                                                                                                                                                                 | <b>Required</b>                      |
| Overall: Inspections             | 1.3   | A boat may be inspected at any time by an equipment inspector or measurer appointed for the event. If she does not comply with these regulations, her entry may be rejected or she will be subject to a protest filed by the RC. A Violation of the Safety Equipment Requirements may result in a penalty other than disqualification.                                                                                                                                                                                                                                                       | <b>Required</b>                      |
| Overall: Equipment and Knowledge | 1.4   | All equipment required shall function properly, be regularly checked, cleaned and serviced, and be of a type, size and capacity suitable for the intended use and size of the boat and the size of the crew. This equipment shall be readily accessible while underway and, when not in use, stored in such a way that deterioration is minimized.                                                                                                                                                                                                                                           | <b>Required</b>                      |
| Overall: Secure Storage          | 1.5   | A boat's heavy items such as batteries, stoves, toolboxes, anchors, chain and internal ballast shall be secured.                                                                                                                                                                                                                                                                                                                                                                                                                                                                             | <b>Required</b>                      |
| Overall: Watertight Integrity    | 1.7   | A boat's hull, including, deck, coach roof, windows, hatches and all other parts, shall form an integral watertight unit, and any openings in it shall be capable of being immediately secured to maintain this integrity.                                                                                                                                                                                                                                                                                                                                                                   | <b>Required</b>                      |
| Hull and Structure: Stability    | 2.2.3 | A boat with moveable or variable ballast (water or canting keel) shall comply with the requirements of Appendix K.                                                                                                                                                                                                                                                                                                                                                                                                                                                                           | <b>Required</b>                      |
| Hull and Structure: Lifelines    | 2.4.1 | A boat's deck including the headstay shall be surrounded by a suitably strong enclosure, typically consisting of lifelines and pulpits, meeting the requirements in 2.4.2 to 2.4.8.<br><b><i>(CYC Notice of Race Addendum 3.3(a): USSER 2.4 required, except for boats under 9 meters or boats under 12 meters with crew position inboard except briefly to perform a necessary task. For boats that do not meet USSER 2.4, crew must wear personal floatation devices, as in RRS 40, while on the water except briefly while changing or adjusting clothing or personal equipment.)</i></b> | <b><i>CYC Required (see NOR)</i></b> |

| Section Name                             | #       | Requirement                                                                                                                                                                                                                                                                                                                                                                                                                                                                                                                                                                                                                   | Nearshore                     |
|------------------------------------------|---------|-------------------------------------------------------------------------------------------------------------------------------------------------------------------------------------------------------------------------------------------------------------------------------------------------------------------------------------------------------------------------------------------------------------------------------------------------------------------------------------------------------------------------------------------------------------------------------------------------------------------------------|-------------------------------|
| Hull and Structure:<br>Lifelines         | 2.4.2   | A boat's stanchion and pulpits bases shall be within the working deck.                                                                                                                                                                                                                                                                                                                                                                                                                                                                                                                                                        | <i>CYC Required (see NOR)</i> |
| Hull and Structure:<br>Lifelines         | 2.4.3   | Bow pulpits may be open, but the opening between the vertical portion of stanchion pulpit and any part of the boat shall not exceed 14.2" (360mm).                                                                                                                                                                                                                                                                                                                                                                                                                                                                            | <i>CYC Required (see NOR)</i> |
| Hull and Structure:<br>Lifelines         | 2.4.4   | Lifelines shall be uncoated stainless steel wire. A multipart-lashing segment not to exceed 4" per end termination for the purpose of attaching lifelines to pulpits is allowed. Lifelines shall be taut.<br><b><i>(CYC Notice of Race Addendum 3.3(b): Wire recommended for durability; however, if the person in charge believes it to be safer for the crew, lifelines may be high molecular weight polyethylene (HMPE) line with spliced terminations or terminals specifically intended for the purpose. When HMPE is used, the load-bearing portion (core) shall meet or exceed minimum diameter requirements.)</i></b> | <i>CYC Required (see NOR)</i> |
| Hull and Structure:<br>Lifelines         | 2.4.4.1 | Lifeline deflection shall not exceed the following: a) When a deflecting force of 9 lbs (40N) is applied to a lifeline midway between supports of an upper or single lifeline, the lifeline shall not deflect more than 2" (50mm). This measurement shall be taken at the widest span between supports that are aft of the mast. b) When a deflecting force of 9 lbs (40N) is applied midway between supports of an intermediate lifeline of all spans that are aft of the mast, deflection shall not exceed 5" (120mm) from a straight line between the stanchions.                                                          | <i>CYC Required (see NOR)</i> |
| Hull and Structure:<br>Lifelines         | 2.4.5   | The maximum spacing between lifeline supports (e.g. stanchions and pulpits) shall be 87" (2.2m).                                                                                                                                                                                                                                                                                                                                                                                                                                                                                                                              | <i>CYC Required (see NOR)</i> |
| Hull and Structure:<br>Lifelines         | 2.4.6   | Boats under 30' (9.14m) shall have at least one lifeline with 18" (457mm) minimum height above deck, and a maximum vertical gap of 18" (457mm). Taller heights will require a second lifeline. The minimum diameter shall be 1/8" (3mm).                                                                                                                                                                                                                                                                                                                                                                                      | <i>CYC Required (see NOR)</i> |
| Hull and Structure:<br>Lifelines         | 2.4.7   | Boats 30' and over (9.14m) shall have at least two lifelines with 24" (762mm) minimum height above deck, and a maximum vertical gap of 15" (381mm). The minimum diameter will be 5/32" (4mm) for boats to 43' (13.1m) and 3/16" (5mm) for boats over 43' (13.1m).                                                                                                                                                                                                                                                                                                                                                             | <i>CYC Required (see NOR)</i> |
| Hull and Structure:<br>Lifelines         | 2.4.8   | Toe rails shall be fitted around the foredeck from the base of the mast with a minimum height of 3/4" (18mm) for boats under 30' (9.14m) and 1" (25mm) for boats over 30'. An additional installed lifeline that is 1-2" (25-51mm) above the deck will satisfy this requirement for boats without toerails.                                                                                                                                                                                                                                                                                                                   | <i>CYC Required (see NOR)</i> |
| Hull and Structure:<br>Lifelines         | 2.4.9   | Trimarans are exempted from the lifeline requirement where there is a trampoline outboard of the main hull, except that a lifeline must run from the top of a bow pulpit to the forward crossbeam at the outboard edge of the bow net or foredeck. Catamarans with trampoline nets between the hulls are exempted from the lifeline requirement. All catamarans are exempted from the need for pulpits and lifelines across the bow.                                                                                                                                                                                          | <i>CYC Required (see NOR)</i> |
| Hull and Structures:<br>Dewatering pumps | 2.5.3   | A boat shall have a manual bilge pump of at least a 10 GPM (37.8 liter per minute) capacity.                                                                                                                                                                                                                                                                                                                                                                                                                                                                                                                                  | <b>Required</b>               |



| Section Name                                   | #      | Requirement                                                                                                                                                                                                                                                                                                                                                                                                                                                                                                                                                                                                                                                                | Nearshore                              |
|------------------------------------------------|--------|----------------------------------------------------------------------------------------------------------------------------------------------------------------------------------------------------------------------------------------------------------------------------------------------------------------------------------------------------------------------------------------------------------------------------------------------------------------------------------------------------------------------------------------------------------------------------------------------------------------------------------------------------------------------------|----------------------------------------|
| Hull and Structure:<br>Mechanical Propulsion   | 2.7.2  | A boat shall have a mechanical propulsion system that is quickly available and capable of driving the boat at a minimum speed in knots equivalent to the square root of LWL in feet (1.8 times the square root of the waterline in meters) for 4 hours.<br><b><i>(CYC Notice of Race Addendum 3.3(c): USSER 2.7.2 required.)</i></b>                                                                                                                                                                                                                                                                                                                                       | <b><i>CYC Required (see NOR)</i></b>   |
|                                                | 3.1.1  | Each crewmember shall have a life jacket that provides at least 33.7lbs (150N) of buoyancy, intended to be worn over the shoulders (no belt pack), meeting either U.S. Coast Guard or ISO specifications. Alternatively, each crewmember shall have an inherently buoyant off-shore life jacket that provides at least 22lbs (100N) of buoyancy meeting either U.S. Coast Guard or ISO specifications.                                                                                                                                                                                                                                                                     | <b><i>Not Required (see 3.1.3)</i></b> |
| Safety Equipment:<br>Personal                  | 3.1.3  | Each crewmember shall have a life jacket intended for small boat sailing or other active boating. Each such life jacket shall be USCG, ISO, or applicable government approved or shall meet the ocean requirement of 3.1.1.                                                                                                                                                                                                                                                                                                                                                                                                                                                | <b>Required</b>                        |
| Safety Equipment:<br>Navigation Lights         | 3.3.1  | A boat racing between sunset and sunrise shall carry navigation lights that meet U. S. Coast Guard or applicable government requirements mounted so that they will not be obscured by the sails nor be located below deck level.                                                                                                                                                                                                                                                                                                                                                                                                                                           | <b>Required</b>                        |
| Safety Equipment:<br>Fire Extinguishers        | 3.4    | A boat shall carry fire extinguisher(s) that meets U.S. Coast Guard or applicable government requirements, when applicable.                                                                                                                                                                                                                                                                                                                                                                                                                                                                                                                                                | <b>Required</b>                        |
| Safety Equipment:<br>Sound Producing Equipment | 3.5    | A boat shall carry-sound-making devices that meets U.S. Coast Guard or applicable government requirements, when applicable.                                                                                                                                                                                                                                                                                                                                                                                                                                                                                                                                                | <b>Required</b>                        |
| Safety Equipment:<br>Visual Distress Signals   | 3.6.6  | A boat shall carry U.S. Coast Guard (or applicable government entity) flares meeting day-night requirements not older than the expiration date.                                                                                                                                                                                                                                                                                                                                                                                                                                                                                                                            | <b>Required</b>                        |
|                                                | 3.7.1  | A boat shall carry a Lifesling or equivalent man overboard rescue device equipped with a self igniting light stored on deck and ready for immediate use.                                                                                                                                                                                                                                                                                                                                                                                                                                                                                                                   | <b>Not Required</b>                    |
| Safety Equipment:<br>Man Overboard             | 3.7.2  | A boat shall have a <del>man overboard pole and flag</del> , with a lifebuoy, a self-igniting light, a whistle, and a drogue attached. A self-inflating Man Overboard Module, Dan Buoy or similar device will satisfy this requirement. Self-inflating apparatus shall be tested and serviced in accordance with the manufacturer's specifications. These items shall be stored on deck, ready for immediate use, and affixed in a manner that allows for a "quick release".<br><b><i>(CYC Notice of Race Addendum 3.3(d): USSER 3.7.2 required, "a man overboard pole and flag, with a lifebuoy" changed to "a lifebuoy", light required from sunset to sunrise.)</i></b> | <b><i>CYC Required (see NOR)</i></b>   |
| Safety Equipment:<br>Man Overboard             | 3.7.3  | A boat shall have a throwing sock-type heaving line of 50' (15m) or greater of floating polypropylene line readily accessible to the cockpit.                                                                                                                                                                                                                                                                                                                                                                                                                                                                                                                              | <b>Required</b>                        |
| Safety Equipment:<br>Man Overboard             | 3.7.4  | A boat shall carry a Coast Guard or applicable government approved "throwable device". If the device carried under 3.7.1 or 3.7.2 satisfies this requirement, then no additional device is needed.                                                                                                                                                                                                                                                                                                                                                                                                                                                                         | <b>Required</b>                        |
| Safety Equipment:<br>Emergency Communications  | 3.8.3  | A boat shall have a VHF radio which may be fixed or handheld.                                                                                                                                                                                                                                                                                                                                                                                                                                                                                                                                                                                                              | <b>Required</b>                        |
| Safety Equipment:<br>Navigation                | 3.19.1 | A boat shall have a permanently mounted magnetic compass independent of the boat's electrical system suitable for steering at sea.                                                                                                                                                                                                                                                                                                                                                                                                                                                                                                                                         | <b>Required</b>                        |

| Section Name                     | #      | Requirement                                                                                                                                                                                                                                                                                                                                                                | Nearshore                     |
|----------------------------------|--------|----------------------------------------------------------------------------------------------------------------------------------------------------------------------------------------------------------------------------------------------------------------------------------------------------------------------------------------------------------------------------|-------------------------------|
| Safety Equipment: Damage Control | 3.22   | A boat shall carry soft plugs of an appropriate material, tapered and of the appropriate size, attached or stowed adjacent to every through-hull opening.<br><i>(CYC Notice of Race Addendum 3.3(f): USSER 3.22 required.)</i>                                                                                                                                             | <b>CYC Required (see NOR)</b> |
| Gear: Anchoring                  | 3.23   | A boat shall carry one anchor, meeting the anchor manufacturer's recommendations based on the yacht's size, with a suitable combination of chain and line.                                                                                                                                                                                                                 | <b>Required</b>               |
| Gear: Lights                     | 3.24.3 | A boat shall carry at least two watertight flashlights with spare batteries in addition to the requirement of 3.24.1.                                                                                                                                                                                                                                                      | <b>Required</b>               |
| Gear: Medical Kits               | 3.25   | A boat shall carry a first aid kit and first aid manual suitable for the likely conditions of the passage and the number of crew aboard.                                                                                                                                                                                                                                   | <b>Required</b>               |
| Gear: Radar Reflectors           | 3.26   | A boat shall carry an 11.5" (292mm) diameter or greater octahedral radar reflector or one of equivalent performance.<br><i>(CYC Notice of Race Addendum 3.3(g): USSER 3.26 required.)</i>                                                                                                                                                                                  | <b>CYC Required (see NOR)</b> |
| Gear: Dewatering                 | 3.27.2 | A boat shall carry one sturdy bucket of at least two gallons (8 liters) capacity with lanyards attached.                                                                                                                                                                                                                                                                   | <b>Required</b>               |
| Skills: Man Overboard            | 4.2    | Annually, two-thirds of the boat's racing crew shall practice man-overboard procedures appropriate for the boat's size and speed. The practice shall consist of marking and returning to a position on the water, and demonstrating a method of hoisting a crewmember back on deck, or other consistent means of reboarding the crewmember.                                | <b>Required</b>               |
| Skills: Crew Training            | 4.4    | As required in 1.2 above the person in charge shall ensure that all crew members know where all emergency equipment is located and how to operate the equipment. In addition, the person in charge and crew should discuss how to handle various emergency situations including Crew Overboard, Grounding, Loss of steering, Flooding, Fire, Dismasting, and Abandon Ship. | <b>Required</b>               |
| Skills: Crew Training            | 4.6    | Lifejackets as described in 3.1.1 – 3.1.3 should be worn by all crew on deck in any conditions where recovery may be difficult. It is recommended that lifejackets be worn by all crew on deck unless the person in charge has indicated that they may be set aside.                                                                                                       | <b>Required</b>               |

## Puget Sound Sailboat Safety Regulations

2014 Revision as adopted by Shilshole Bay Yacht Club, Sloop Tavern Yacht Club, Corinthian Yacht Club of Seattle, and Seattle Yacht Club

We must share Puget Sound with its commercial traffic, including many deep-water vessels and tows. It is sobering to note that, if your boat is one mile dead-ahead of a freighter coming down the Sound at normal speed, and the freighter's helm is put hard over to avoid you, the freighter's bow will miss you, but her stern will not! Obviously, this implies that early and decisive action is required to keep your boat out of the path of a large oncoming vessel or tow. The requirements of this document may be incorporated into an event by reference in a notice of race.

1. Yachts must not sail across a tow line, too close ahead, or too close alongside of commercial traffic. Deep water vessels have limited ability to change course and speed. Barges under tow can yaw unexpectedly well out to the side at speeds essentially the same as they are being towed. Yachts should not pass less than one mile ahead and 1/4 mile to the side of large vessels.
2. Rule 10 of the International and Inland Rules to Prevent Collisions at Sea (COLREGS) requires that no power-driven vessel less than 20 meters (66 feet) in length, and no sailing vessel (of any size) may impede the safe passage of a power-driven vessel following a Vessel Traffic System (VTS) Lane.
3. Rule 9 of the COLREGS requires that no power vessel of less than 20 meters (66 feet) in length and no sailing vessel (of any length) shall impede the safe passage of any vessel which can navigate only within a narrow channel or fairway. Puget Sound can be considered a "narrow channel" for most large commercial traffic. "Impede" means to cause to alter speed or course or to take evasive action.
4. A yacht in position where it may impede commercial traffic must exit from the "danger area" immediately, under auxiliary power if necessary. If power is used, it must be reported to the Race Committee at the finish line. Also, a written report must be made on a protest form, showing the location, time, duration of power use, speed, direction of exit, and that the competitive position of the yacht was not improved. If the last item cannot be demonstrated adequately, a time penalty may be imposed.
5. Navigation lights must be shown between sunset and sunrise as required by the International Rules of the Road.
6. Observed and/or reported violations of the safety regulations may be protested. The Race Committee shall have the option of issuing a "warning" when deemed appropriate. Warnings are recorded and may be considered when judging any future reports.

## US Coast Guard Warning

The following information was provided by the US Coast Guard.

**Do not approach within 100 yards of any Navy Vessel, Washington State Ferry, or Ship.** If you need to pass within 100 yards of these vessels in order to ensure a safe passage in accordance with the Navigation Rules, you must contact the ship on VHF-FM channel 16 or 13. (33 CFR 165.2030, 165.1317, 165.1313)

**You must operate at minimum speed within 500 yards of any of these vessel types.**



**Violations of these Security Zones are a felony offense, punishable by up to 6 years in prison and/or up to \$250,000 in fines.**

# Contacts

## Leadership Team

|                      |                   |                               |
|----------------------|-------------------|-------------------------------|
| Commodore            | David Barnes      | davidvvbarnes@hotmail.com     |
| Vice Commodore       | Shelagh Hansen    | macaulay.shelagh@gmail.com    |
| Rear Commodore       | Charlie Macaulay  | cmacaulay@centurytel.net      |
| Jr. Staff Commodore  | Jakob Lichtenberg | jakob.lichtenberg@outlook.com |
| Secretary            | Melanie Edwards   | uffdamel@gmail.com            |
| Treasurer            | Remmert Wolters   | remmertw@frostnw.com          |
| Fleet Captain Race   | Matthew Wood      | matthewewood@outlook.com      |
| Fleet Captain Cruise | Chris McMuldloch  | mcmuldloch@comcast.net        |
| Director (2020-21)   | Stuart Burnell    | stuartburnell@outlook.com     |
| Director (2020-21)   | Tom Kerr          | tckerr@hotmail.com            |
| Director (2020-21)   | Shauna Walgren    | shauna.walgren@gmail.com      |
| Director (2019-20)   | Rich Bustamante   | rrbustamante@comcast.net      |
| Director (2019-20)   | Carl Sheath       | carl.j.sheath@gmail.com       |
| Director (2019-20)   | Peggy Watt        | peggywatt09@gmail.com         |

## Race Organization Contacts

|                     |                |                                |
|---------------------|----------------|--------------------------------|
| Fleet Captain Race  | Matthew Wood   | matthewewood@outlook.com       |
| Lake Protest Chair  | Wayne Balsiger | webalsiger@comcast.net         |
| Sound Protest Chair | Jared Hickman  | jared@celebrationboatworks.com |
| PHRF Handicapper    | Matthew Wood   | matthewewood@outlook.com       |

## Business Management Staff

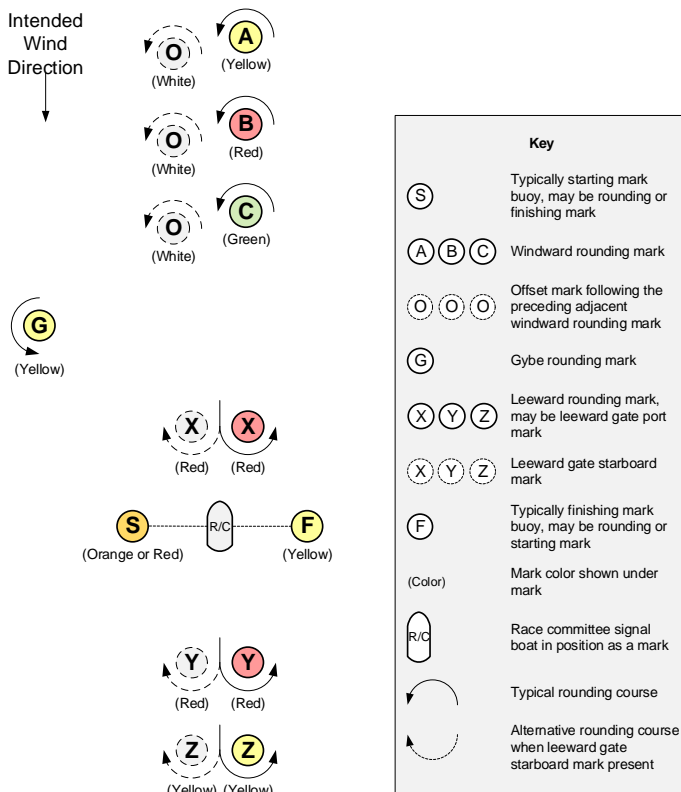
|                  |                                                                              |                                       |
|------------------|------------------------------------------------------------------------------|---------------------------------------|
| Business Manager | Cindy Barrett<br><i>Racing, Food &amp; Bev.,<br/>Sponsorship, Finance/HR</i> | office@cykseattle.org<br>206-789-1919 |
| Office Staff     | Aryn O'Haleck<br><i>Jr. Sailing, Membership,<br/>Social, Communications</i>  | office@cykseattle.org<br>206-789-1919 |

## Principle Race Officers (PROs)

|            |                  |                          |
|------------|------------------|--------------------------|
| Lake PRO   | Troy Childs      | tchilds@auburnvw.com     |
| Sound PRO  | Egor Klevak      | comorado@gmail.com       |
| Senior PRO | Charley Rathkopf | charley-cyc@rathkopf.org |

## Buoy Course Marks (relative positions)

This is a typical configuration. Please note that the Sailing Instructions for a particular regatta may use modified or different mark descriptions.

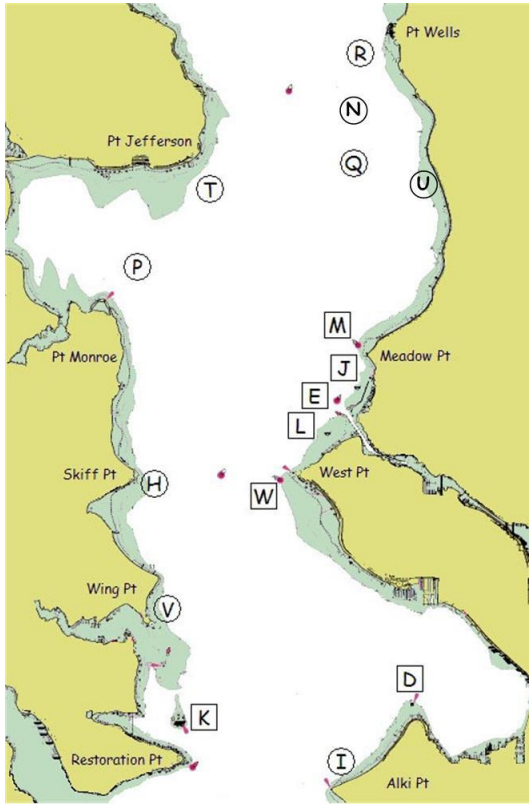


The course diagram for buoy course marks shows the general orientation of the race committee signal boat ("R/C"), other marks (identified by the letters S, A, B, C, O, G, X, Y, Z and F), and the intended wind direction. All buoy course marks other than the race committee signal boat are inflatable buoys. Positions are approximate and the diagram is not to scale.

Notes:

- S When a starting mark for a downwind start, may be on either side of the race committee signal boat.

## Puget Sound Geographic Marks (fixed positions)



Bearings are magnetic. Distances are nautical miles (NM). Bearings, distances, and positions are approximate. Each temporary mark is shown with its label in a circle. Each permanent mark is near its label in a square box.

- D Duwamish Head Lt. (LL #16910)
- E Shilshole Bay Entrance Lighted Buoy G "1" (LL #18125)
- H Temporary mark 0.3 NM E of Skiff Pt.
- I Temporary mark 0.5 NM N of Alki Pt.
- J Round ball buoy with flag 0.25 NM SSW of marina N entrance
- K Blakely Rock (LL #16830)
- L White buoy 0.5 NM SW of marina S entrance
- M Meadow Pt. Buoy (LL #16765)
- N Temporary mark 1.0 NM E of Traffic Separation Lane Lighted Buoy SF (LL #16745)
- P Temporary mark 0.5 NM NNE of Pt. Monroe
- Q Temporary mark 3.0 NM bearing 340° from Meadow Pt. Buoy
- R Temporary mark 0.5 NM SW of Pt. Wells
- T Temporary mark 0.5 NM SE of Pt. Jefferson
- U White spar buoy 2.9 NM bearing 6° from Meadow Pt. Buoy at 47° 44.4N, 122° 22.95W
- V Temporary mark 0.3 NM NNE of Wing Pt.
- W West Pt. Buoy (LL #16805)

# CYC Business Members

These businesses are corporate members of Corinthian Yacht Club. Please thank them for their support and involvement in sailing.

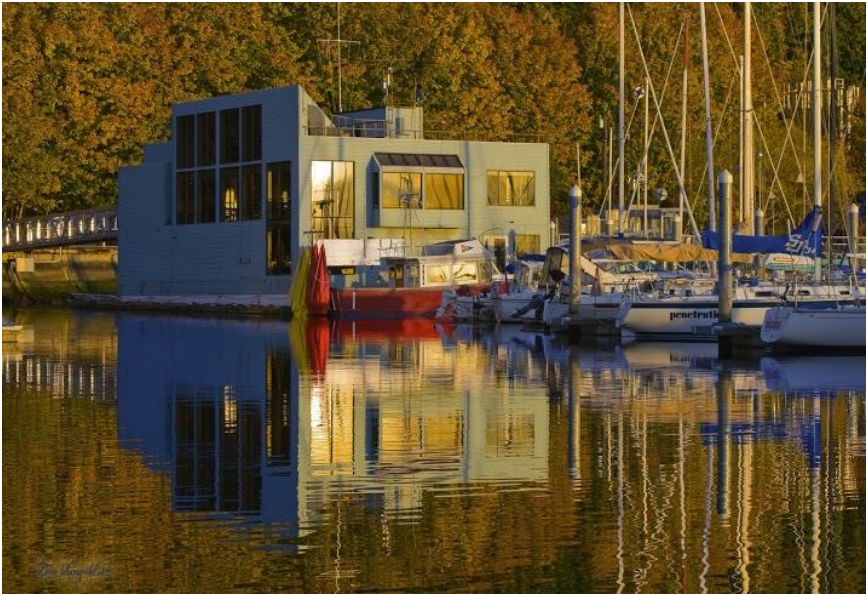








*Sharing the Sailing Community*



Clubhouse at Shilshole Bay Marina, Ballard

Photo: Tom Ringold

Because you love sailing, please consider joining the Corinthian Yacht Club of Seattle. We need all the people who enjoy the club to sign up and be a part of supporting our community through our organization. Many of our members continue to be members of other clubs, each supporting our sport in their own way. Even if you don't happen to own a boat, you can own our yacht club and claim your equal stake and influence in supporting our sailing way of life through the club. The Adult/Family membership is just \$39.50 a month. Please talk with your friends who are members about joining.

7755 Seaview Ave NW, Pier V  
Seattle, Washington 98117

[www.cycseattle.org](http://www.cycseattle.org) • 206.789.1919 • [office@cycseattle.org](mailto:office@cycseattle.org)