



Sharing the Sailing Community

Center Sound Series

Blakely Rock Race – March 7, 2020
 Scatchet Head Race – March 21, 2020
 Three Tree Point Race – March 28, 2020

Sailing Instructions

1 RULES

- 1.1 This regatta will be governed by the rules as defined in the Racing Rules of Sailing (RRS).
- 1.2 US Sailing prescriptions to the following rules apply: RRS 34, 40, 48.1, 60.3, 61.4, 63.2, 63.4, 64.3(b), 67, 70.5(a), 76.1, 82, 86.3, 88.2, Appendix G and R. Inclusion of additional prescriptions may be noted elsewhere in the Notice of Race or Sailing Instructions. US Sailing prescriptions are available at www.ussailing.org.
- 1.3 Changes to the rules may be noted elsewhere in the Notice of Race or Sailing Instructions. If the Notice of Race and Sailing Instructions are in conflict, the Sailing Instructions have precedence.

2 NOTICES TO COMPETITORS

- 2.1 Notices to competitors will be posted on the official notice board at the CYC clubhouse east entrance and optionally on the CYC website at www.cycseattle.org.
- 2.2 The race committee may provide unofficial communication, which is communication not governed by the rules, at any time by hail or over VHF. A request for redress may not be based on any aspect of unofficial communication, including content, timeliness, or failure to hear. This changes RRS 62.1(a).
- 2.3 See class list for preferred VHF radio channels.

3 CHANGES TO SAILING INSTRUCTIONS

- 3.1 Changes to the Sailing Instructions posted on the official notice board will be posted by 0830 the day it takes effect, except that any change in the schedule of races will be posted by 1800 the day before it takes effect.

4 SCHEDULE

- 4.1 The schedule of races is as follows:

<u>Race</u>	<u>Date</u>
Blakely Rock	March 7, 2020
Scatchet Head	March 21, 2020
Three Tree Point	March 28, 2020

- 4.2 The scheduled time of the first warning signal is 1000 each day. No warning signal will be made after 1400.

5 SIGNALS MADE ASHORE

- 5.1 There is no provision for signals made ashore.

6 RACING AREA AND RACE COMMITTEE SIGNAL BOAT

- 6.1 The racing area is Puget Sound, starting and finishing lines in Shilshole Bay.
- 6.2 The race committee signal boat will be the CYC M/V YC 5. If necessary, an alternate race committee signal boat may be used. The race committee signal boat will display the CYC burgee and a blue "R/C" flag or sign.

7 CLASSES

- 7.1 PHRF-NW, IRC/ORC, and other classes with at least five boats may apply. Monohull, multihull, and casual class boats will race in separate classes.
- 7.2 The class list and assignments will be announced as a notice to competitors issued by 1200 on Friday before the first race. Subsequent changes may be made with the same process as changes to the Sailing Instructions.

8 COURSES

- 8.1 The courses for each race are described below. An alternate course may be signaled, as described in Sailing Instruction 8.2.

Blakely Rock Race

Racing Classes (North wind, signal "NORTH"): Start by leaving the starting mark buoy to port, round mark "N" to port, round mark "K" to port, and finish by leaving the finishing mark buoy to port.

Racing Classes (South wind, signal "SOUTH"): Start by leaving the starting mark buoy to starboard, round mark "K" to starboard, round mark "N" to starboard, and finish by leaving the finishing mark buoy to starboard.

Casual Classes (North wind, signal "NORTH"): Start by leaving the starting mark buoy to port, round mark "N" to port, round mark "W" to port, and finish by leaving the finishing mark buoy to port.

Casual Classes (South wind, signal "SOUTH"): Start by leaving the starting mark buoy to starboard, round mark "W" to starboard, round mark "N" to starboard, and finish by leaving the finishing mark buoy to starboard.

Scatchet Head Race

Racing Classes: Start by leaving the starting mark buoy to port, round Scatchet Head Lighted Gong Buoy



Sharing the Sailing Community

(LL#16555) to port, and finish by leaving the finishing mark buoy to port.

Casual Classes: Start by leaving the starting mark buoy to port, round mark "U" to port, round mark "M" to starboard, round mark "U" to port, and finish by leaving the finishing mark buoy to port.

Three Tree Point Race

Racing Classes: Start by leaving the starting mark buoy to port, round the TTPYC Racing Buoy C to starboard, and finish by leaving the finishing mark buoy to port. The TTPYC Racing Buoy C is a white, 6 inch diameter cylinder rising 8 feet above the water located approximately 1000 feet SE of the Three Tree Point Light.

Casual Classes: Start by leaving the starting mark buoy to port, round mark "D" to port, and finish by leaving the finishing mark buoy to port.

8.2 An alternate course, replacing the course in Sailing Instructions 8.1, is in effect when flag S is displayed with the warning signal. The alternate course is as follows:

(a) The course will be signaled from a reader board on the race committee signal boat. The course description is a series of letters on one row indicating the marks and their required sequence. The first letter displayed is the starting mark buoy, the last letter is the finishing mark buoy, and the letters between are rounding marks. The class number or symbol may precede the course for that class and must be shown if there are multiple rows. Multiple classes may be listed on one row.

(b) All rounding marks other than gate marks and mark F must be left to port. When mark F is used as a rounding mark, a boat must also cross the finishing line from the direction of the last mark when rounding, leaving F to port or starboard depending on the course. When mark S is used as a rounding mark following a leeward mark, a boat must also cross the starting line from the direction of the last mark when rounding.

(c) A leeward rounding mark may be a gate mark when the mark letter is repeated (XX, YY, or ZZ) in the course description. If one of the gate marks is missing, the course at that mark is to round the remaining mark to port.

8.3 If not specified in the course description, marks are specified in Attachment A: Mark Descriptions.

8.4 Except while rounding mark "E" as a mark of the course, a boat must not enter the area near the Shilshole Marina south entrance between Shilshole Bay entrance lighted buoy G "1", entrance lighted buoy R "2", and breakwater light G "3". A boat that fails to observe this restriction may not exonerate herself. This area is an obstruction for a boat required to keep clear.

9 THE START

9.1 The starting line will be between a staff displaying an orange flag on the race committee signal boat and the course side of the starting mark buoy.

9.2 If a general recall for a preceding class is signaled after the warning signal of a succeeding class, then the visual signals for the succeeding class will be removed and the start of the succeeding class will be considered abandoned without further signal.

9.3 If a boat is subject to RRS 29.1, Individual Recall, or RRS 30, Starting Penalties, the race committee may attempt to hail her sail number directly and on VHF. This is unofficial communication as in Sailing Instructions 2.2.

9.4 A boat starting later than ten minutes after her starting signal will be scored Did Not Start (DNS). This changes RRS A5.

9.5 A boat whose warning signal has not been made must avoid the starting area when other boats are racing but have not yet started.

9.6 The race committee signal boat, when a starting mark, may maneuver to maintain the starting line at any time, including while anchored.

10 THE FINISH

10.1 The finishing line will be between a staff displaying an orange flag on the race committee signal boat and the course side of the finishing mark buoy.

10.2 The race committee may adjust the finishing marks to maintain the finishing line without regard to RRS 33.

10.3 If the finishing line is missing at the finish, a boat finishes by passing within 100 yards west of mark "E" when the buoy bears 90 degrees magnetic. If a boat finishes under these circumstances, to be scored she must note her finishing time accurately to the second (e.g. using GPS time) and her finishing position in relation to any nearby boats and report them to the race committee as soon as reasonably possible. This changes US Sailing prescription to RRS 34.

11 TIME LIMIT

11.1 The time limit is the maximum allowable time from a boat's starting signal to her finishing time or a time of day. A boat that does not finish within her time limit will be scored Did Not Finish (DNF). This changes RRS 35.

11.2 Time limits for each race are as follows:

Blakely Rock Race: 8 hours for the first boat in class and for other boats the later of 8 hours or 1 hour after the first boat that sails the course.

Scatchet Head Race: 9 hours for the first boat in class and for other boats the later of 9 hours or 1 hour after the first boat that sails the course.

Three Tree Point Race: 9 hours for the first boat in class and for other boats the later of 9 hours or 1 hour after the first boat that sails the course.



Sharing the Sailing Community

12 PROTESTS AND PENALTIES

- 12.1 A boat intending to protest or request redress for an incident that occurred while racing must orally notify the race committee on the signal boat as soon as reasonably possible after retiring or finishing by hail or VHF until she receives an oral confirmation from the race committee. This changes RRS 61.1(a).
- 12.2 Written protests and requests for redress must be delivered within the protest time limit to a representative of the protest committee near the official notice board.
- 12.3 The protest time limit will be posted on the official notice board and will be 45 minutes after the end of the last race for the class each day or 10 minutes after the posting of the time limit, whichever is later.
- 12.4 Hearing notices will be posted on the official notice board within 5 minutes after the protest time limit to inform parties of the time and place of the hearing. Hearings may commence at any time if parties are present and prepared; otherwise, hearings may be scheduled as early as 10 minutes after the protest time limit. The posting of hearing notices shall be considered notice as required by RRS 63.2.
- 12.5 A boat may not protest another boat for Sailing Instructions 9.5. This changes RRS 60.1(a).
- 12.6 Penalties under Sailing Instructions 9.5 or 14 may be less than disqualification. This changes RRS 64.1.
- 12.7 RRS Appendix V2, Penalties Taken After a Race, applies.

13 SCORING

- 13.1 Boats will be scored in class and overall for each race and the series.
- 13.2 A boat that did not start (OCS), did not finish (DNF), retired (RET), or is disqualified (DSQ, DNE, DGM, UFD, BFD) will be scored for the finishing place one more and a boat that did not start (DNC, DNS) will be scored for the finishing place two more than the number boats starting and finishing and not thereafter retiring or being disqualified. This changes RRS A4.2. RRS A9 is deleted.
- 13.3 A boat's series score will be the total of her race scores. This changes RRS A2.1. One race will constitute a series.
- 13.4 Corrected times for handicap classes will be calculated as follows: PHRF-NW will be Time on Distance and ORC will be windward/leeward Time on Time.

14 EQUIPMENT AND OPERATING REQUIREMENTS

- 14.1 Sailing is an activity that has an inherent risk of damage and injury. Competitors in this event are participating entirely at their own risk. See RRS 4, Decision to Race. The responsibility for a boat's decision to participate in a race or to continue racing is hers alone. The race organizers (organizing authority, race committee, technical committee, protest committee, host club, sponsors, or any other organization or official) will not

be responsible for damage to any boat or other property or the injury to any competitor, including death, sustained as a result of participation in this event. By participating in this event, each competitor agrees to release the race organizers from any and all liability associated with such competitor's participation in this event to the fullest extent permitted by law.

- 14.2 Boats must check in with the race committee signal boat at the starting area each day before their first warning signal. Boats should check in by hail unless safety requires checking in by VHF.
- 14.3 A boat that retires while racing must orally notify the race committee as soon as reasonably possible after retiring by hail or VHF.
- 14.4 Boats must comply with the equipment requirements of US Sailing *US Safety Equipment Requirements* (USSER) as identified and amended in the Notice of Race.
- 14.5 Keelboats must comply with the safety regulations of the US Coast Guard as identified in the Notice of Race.
- 14.6 The race committee or technical committee may inspect a boat at any time before or after racing for compliance with requirements.
- 14.7 A boat may put biodegradable sail stops in the water when hoisting a sail. This changes RRS 55.
- 14.8 A boat rated by her handicap class in consideration of water ballast may use water ballast as rated. This changes RRS 51.
- 14.9 In addition to the requirements of RRS Part 2 preamble, a boat may not impede the passage, cross ahead within $\frac{3}{4}$ nautical miles, or continue to approach within $\frac{1}{4}$ nautical miles (approximately 1500 feet) to the side of a commercial or government vessel over 30 meters in length (including tug and tow) either following a traffic lane or traveling over 15 knots. Boats must follow instruction from the race committee to alter course to avoid vessels based on the race committee's interpretation of these requirements.
- 14.10 A boat that uses its propulsion engine under RRS 1.1 and 42.3(g) or to avoid a collision with a vessel not racing must either retire or file a report with the protest committee under the same requirements as filing a protest. The report must include the reason for using the propulsion engine and distance and direction traveled. The protest committee may then protest the boat to adjust the boat's time or score to remove any advantage that may have been gained in the race. This defines the circumstances in RRS 42.3(i) and changes RRS 64.1. This does not restrict a boat from requesting redress under RRS 62.1(c) for the same incident.

15 SOCIAL ACTIVITIES AND AWARDS

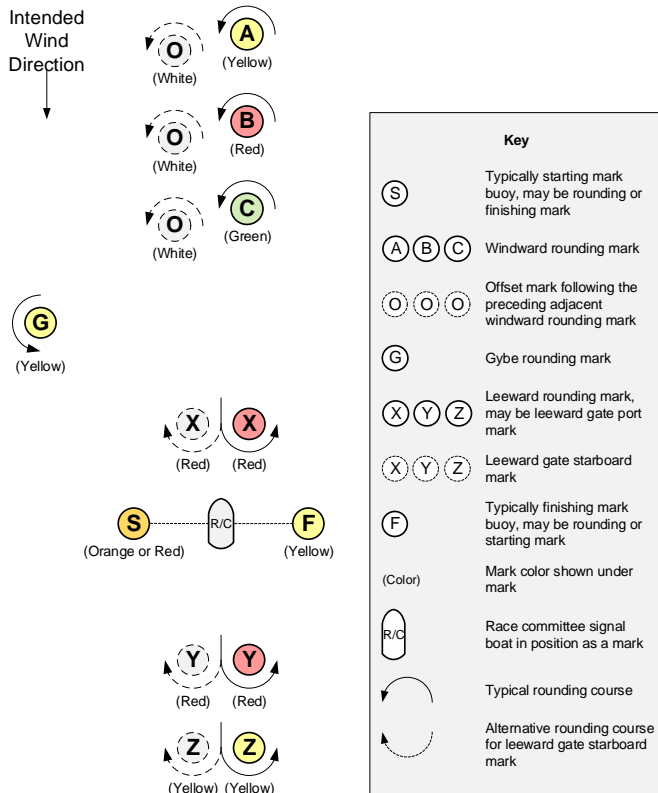
- 15.1 Party at clubhouse after racing. Awards for 1st, 2nd, and 3rd in class for each race. Series awards for 1st overall racing classes per race and 1st, 2nd, and 3rd in class.



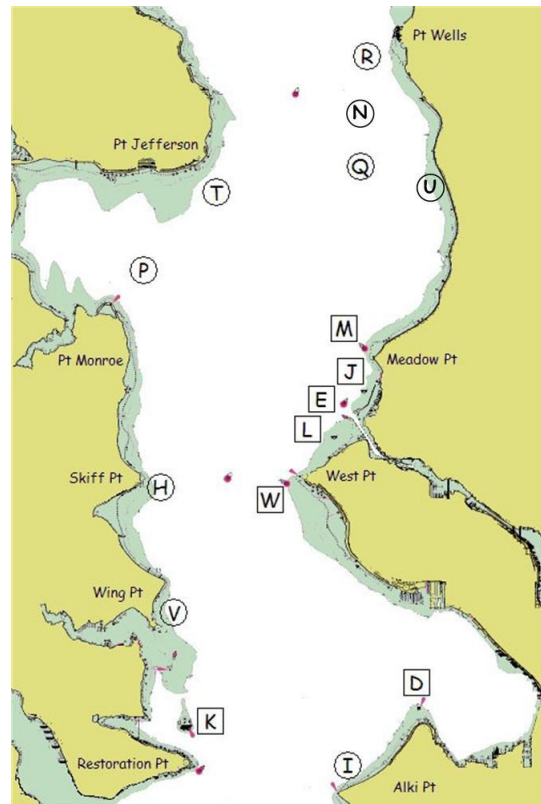
Sharing the Sailing Community

Attachment A: Mark Descriptions

Buoy Course Marks (position relative to R/C)



Geographic Marks (position based on location)



The course diagram for buoy course marks shows the general orientation of the race committee signal boat ("R/C"), other marks (identified by the letters S, A, B, C, O, G, X, Y, Z and F), and the intended wind direction. All buoy course marks other than the race committee signal boat are inflatable buoys. Positions are approximate and the diagram is not to scale.

Notes:

- S When a starting mark for a downwind start, may be on either side of the race committee signal boat.
- XX When XX is signaled in the course description, mark X may be a gate.
- YY When YY is signaled in the course description, mark Y may be a gate.
- ZZ When ZZ is signaled in the course description, mark Z may be a gate.

Bearings are magnetic. Distances are nautical miles (NM). Bearings, distances, and positions are approximate. Each temporary mark is shown with its label in a circle. Each permanent mark is near its label in a square box.

- D Duwamish Head Lt. (LL #16910)
- E Shilshole Bay Entrance Lighted Buoy G "1" (LL #18125)
- H Temporary mark 0.3 NM E of Skiff Pt.
- I Temporary mark 0.5 NM N of Alki Pt.
- J Round ball buoy with flag 0.25 NM SSW of marina N entrance
- K Blakely Rock (LL #16830)
- L White buoy 0.5 NM SW of marina S entrance
- M Meadow Pt. Buoy (LL #16765)
- N Temporary mark 1.0 NM E of Traffic Separation Lane Lighted Buoy SF (LL #16745)
- P Temporary mark 0.5 NM NNE of Pt. Monroe
- Q Temporary mark 3.0 NM bearing 340° from Meadow Pt. Buoy
- R Temporary mark 0.5 NM SW of Pt. Wells
- T Temporary mark 0.5 NM SE of Pt. Jefferson
- U White spar buoy 2.9 NM bearing 6° from Meadow Pt. Buoy at 47° 44.4N, 122° 22.95W
- V Temporary mark 0.3 NM NNE of Wing Pt.
- W West Pt. Buoy (LL #16805)